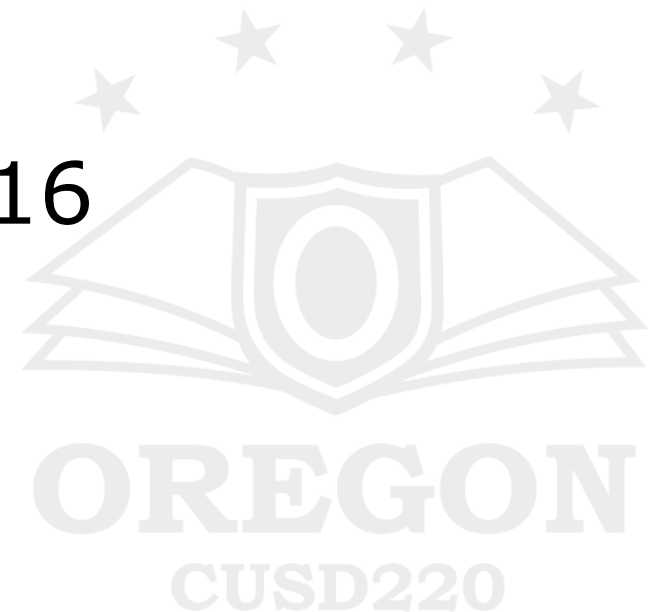




# Oregon School District

## PARCC 2015 Data

January 19, 2016

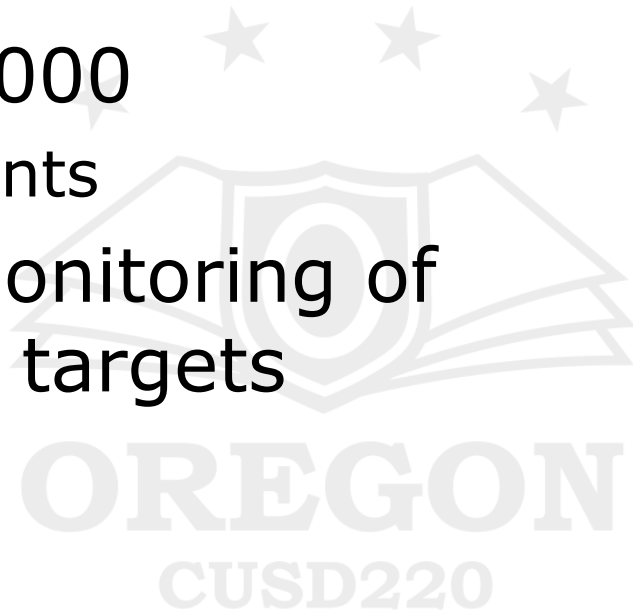




# Oregon School District

## History

- ISAT (Grades 3-8) began in 1990s
  - IGAP/ISAT Transition
- PSAE (Grade 11) began in 2000
  - Included free ACT for all students
- Starting in 2002, used for monitoring of No Child Left Behind (NCLB) targets

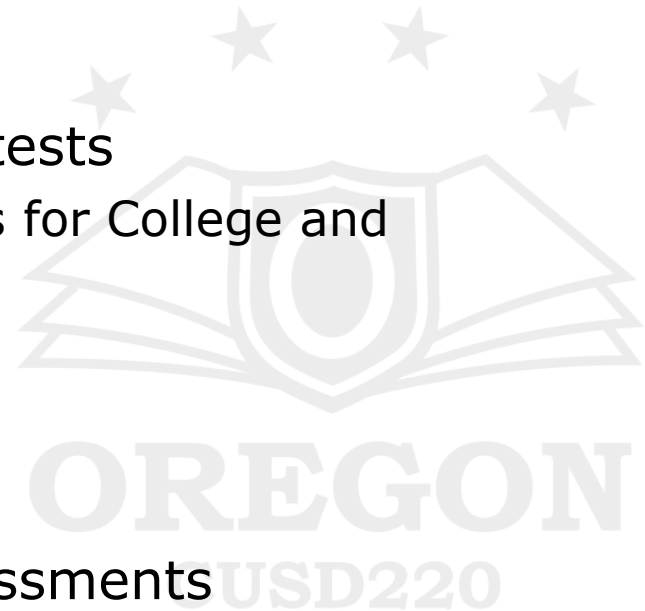




# Oregon School District

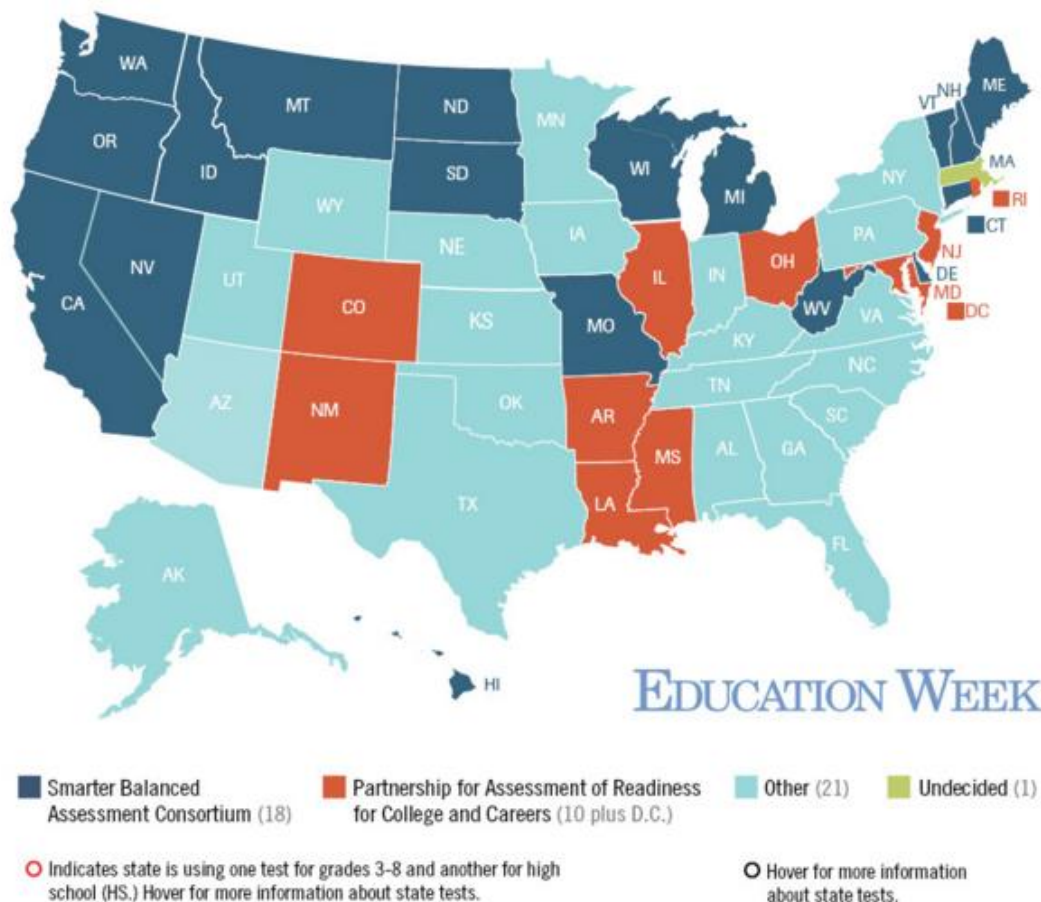
## National Standards

- Common Core (National Governors' Association)
  - High consensus among states
  - Jointly developed standards
  - 42 states adopted in whole or in part
- Two consortia were formed to develop tests
  - Partnership for Assessment of Readiness for College and Careers (PARCC)
    - Started with 24 states
    - 12 states in 14-15
    - 3 more have dropped out
  - Smarter Balanced [18 states signed on]
- Other states developing their own assessments





# Oregon School District



Source: [http://blogs.edweek.org/edweek/curriculum/2015/02/a\\_map\\_of\\_states\\_2015\\_testing\\_p.html](http://blogs.edweek.org/edweek/curriculum/2015/02/a_map_of_states_2015_testing_p.html)



# Oregon School District

## What we Know

- Students in grades 3-8, Alg 02 and Eng 11 take the assessment
  - Two sessions in 14-15
  - One session in 15-16
- Performance reported out at 5 levels:
  1. Did not yet meet
  2. Partially met
  3. Approached
  4. Met
  5. Exceeded

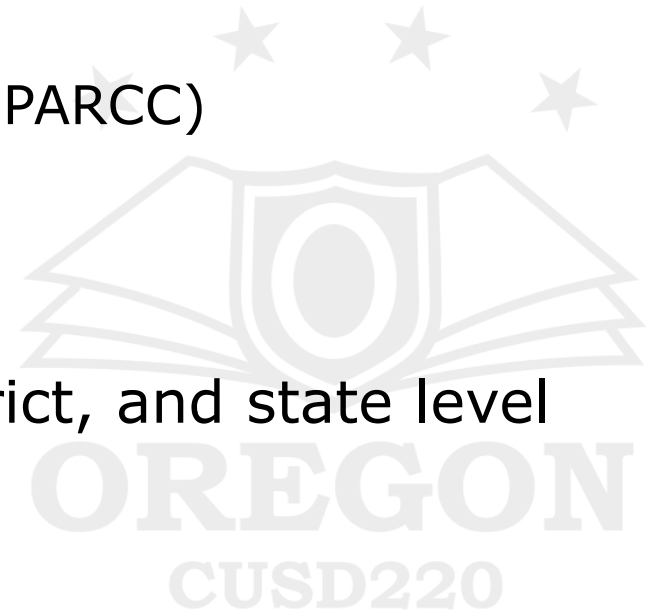




# Oregon School District

## What we Know

- Subject areas
  - English/Language Arts
  - Mathematics
  - Science coming in spring 2016 (Not PARCC)
- Learning Standards
  - Aligned to Common Core
  - Aligned with our curriculum as intended
- Basic summary data at school, district, and state level

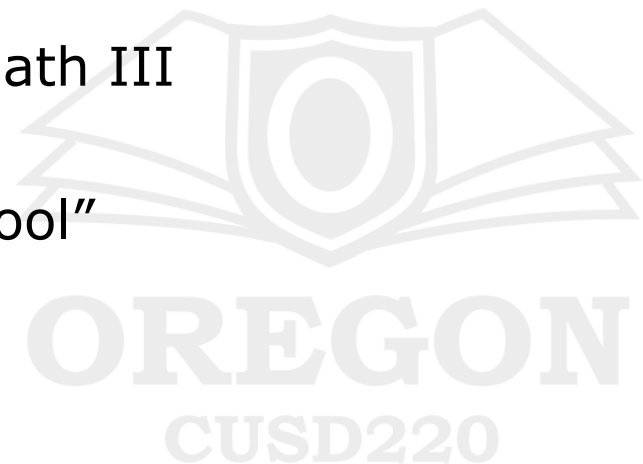




# Oregon School District

## What we Don't Know

- What Meeting + Exceeding means
- If cutscores are correlated with future success
- Which high school subjects will be tested in future
  - Alg I, Alg II, Geo, Math I, Math II, Math III
  - ELA I, ELA II, ELA III
  - Results are all reported as “high school”

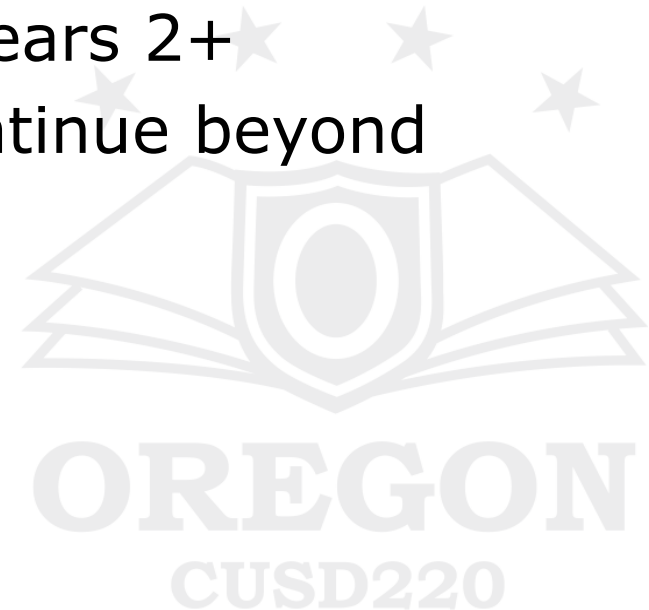




# Oregon School District

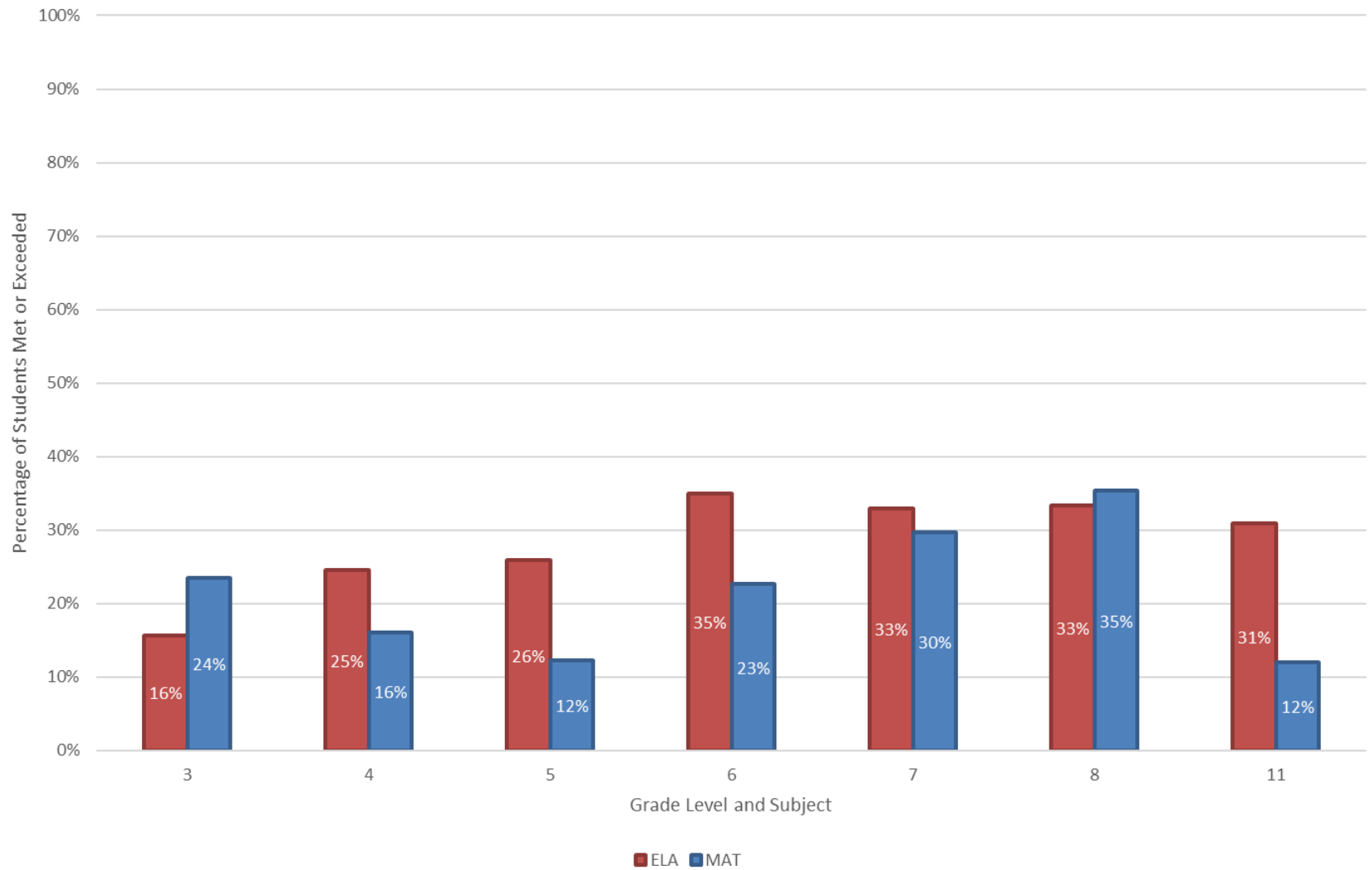
## What we Don't Know

- Why students taking the assessment did better on paper than online
- If we will see growth scores in years 2+
- Whether the assessment will continue beyond 2015-2016

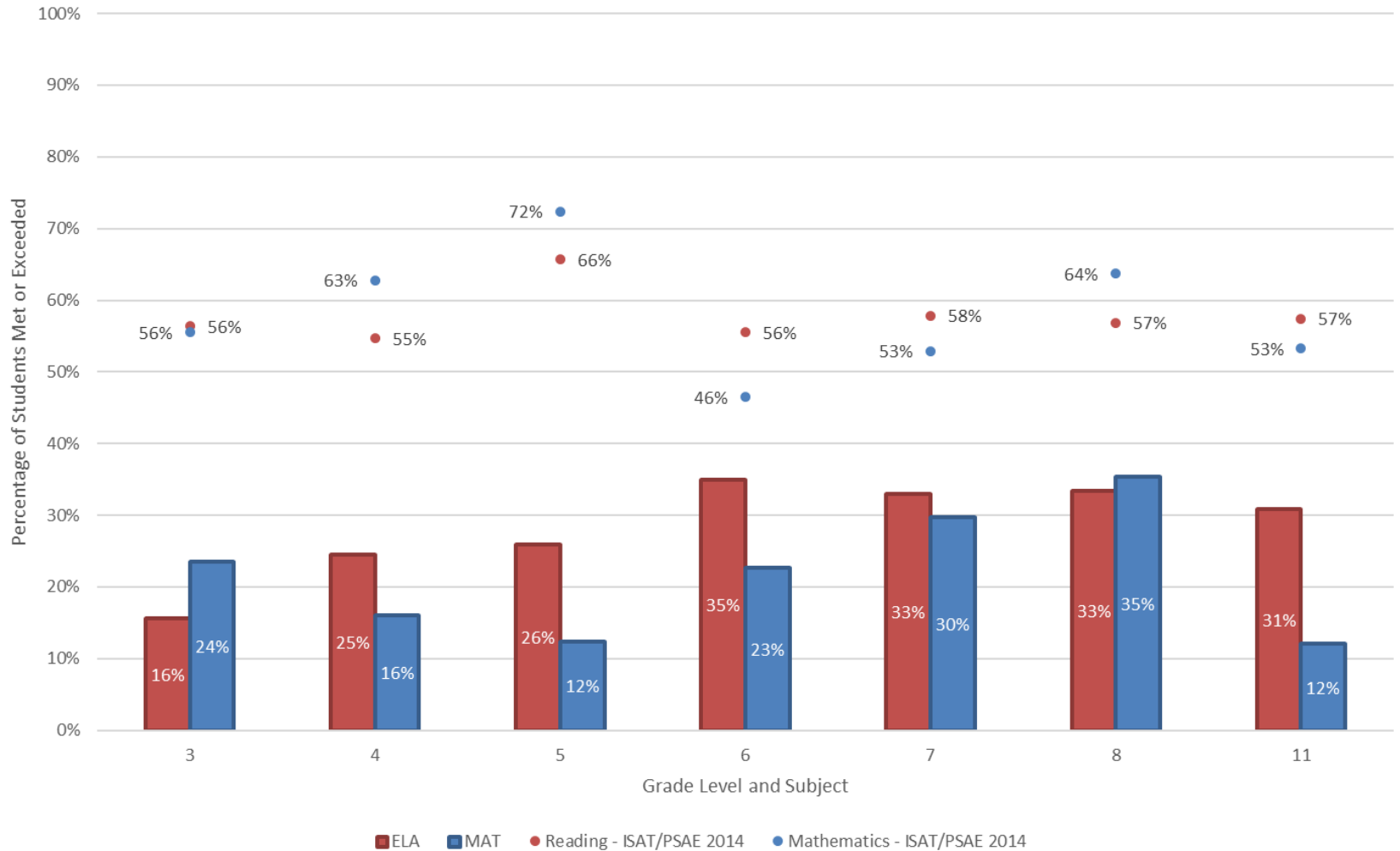




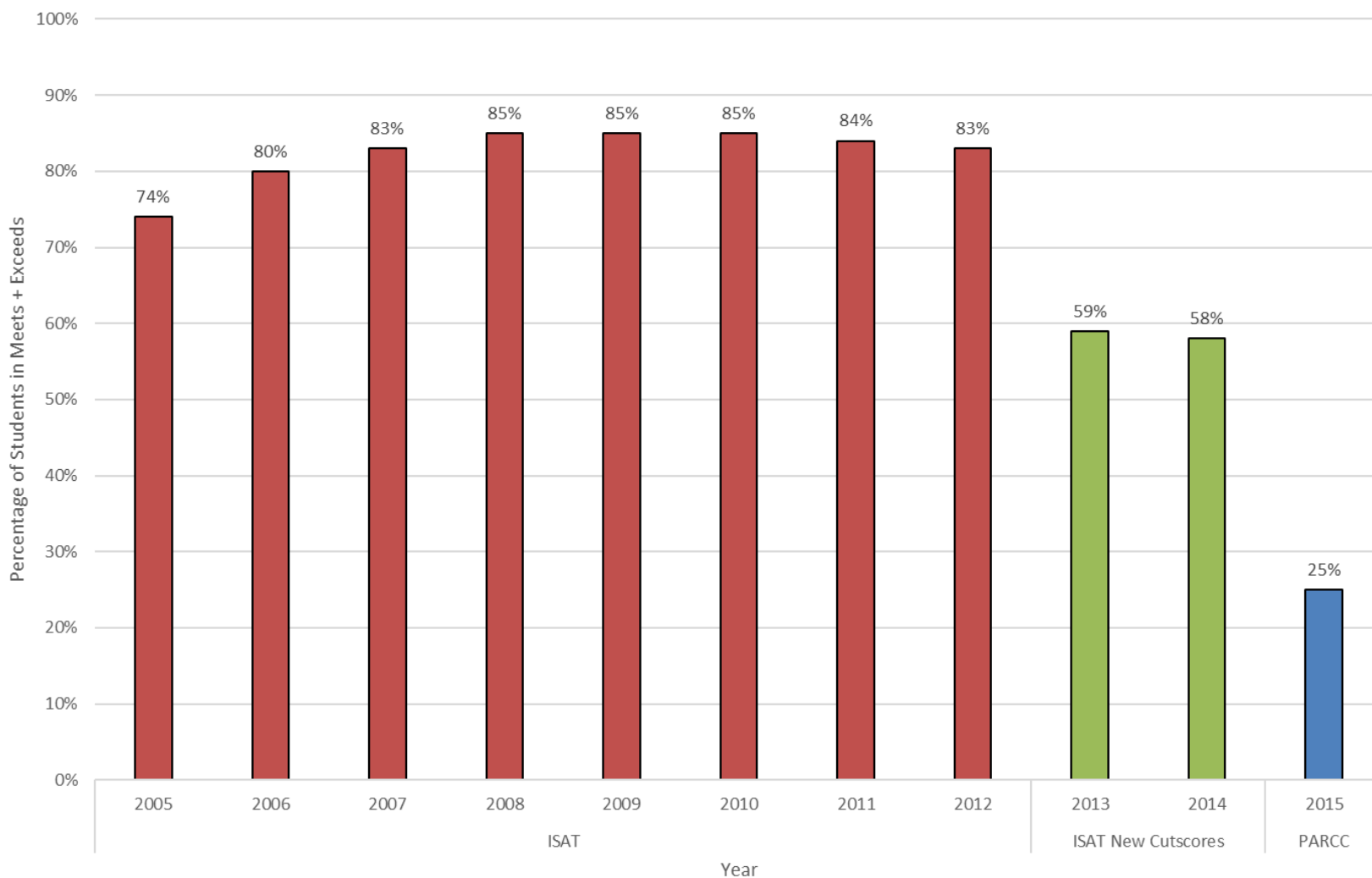
Oregon CUSD PARCC 2015  
English/Language Arts  
By Grade and Performance Level



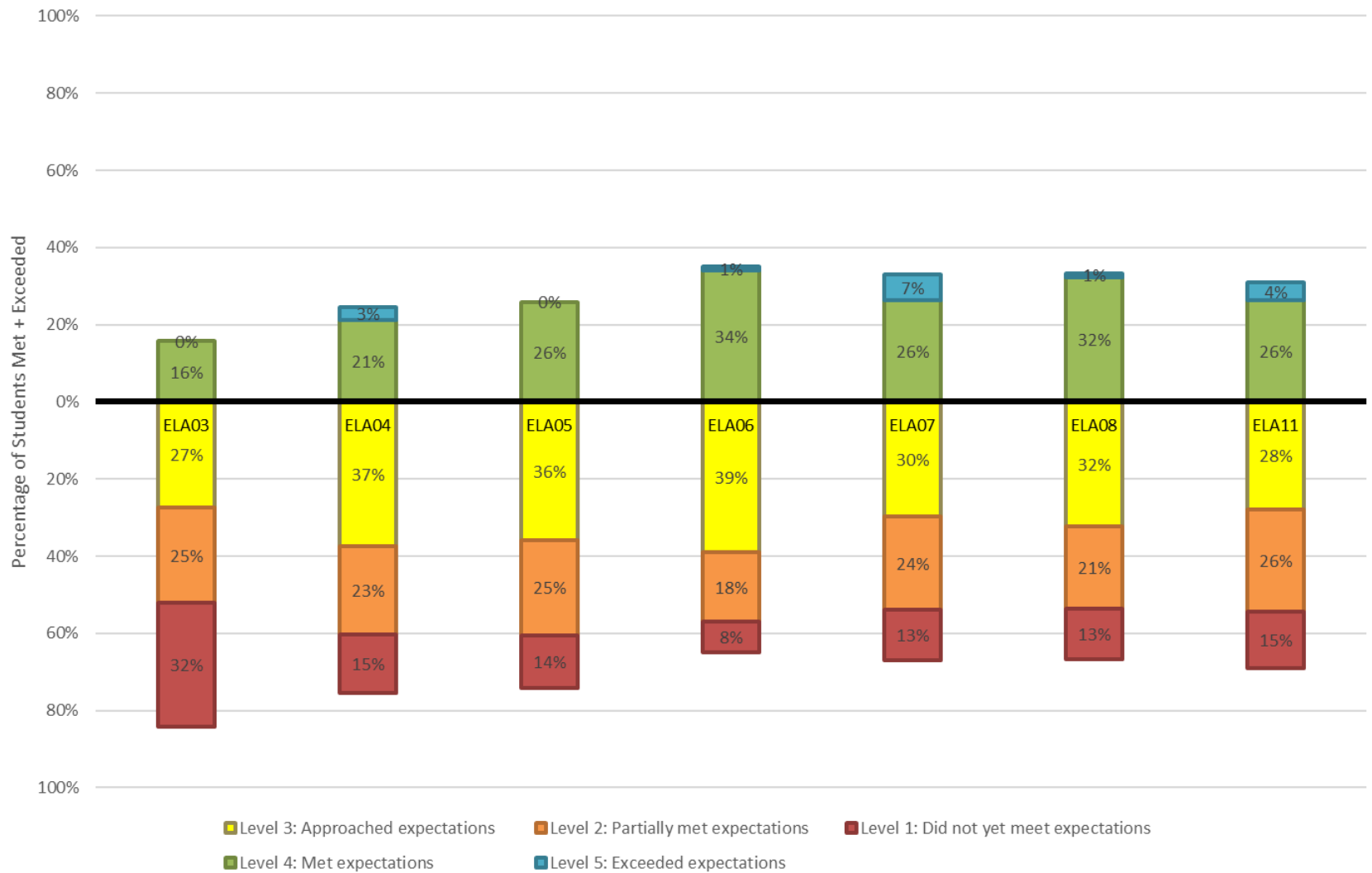
Oregon CUSD PARCC 2015  
English/Language Arts and Mathematics  
By Grade and Performance Level  
with SY 2014 ISAT/PSAE Data



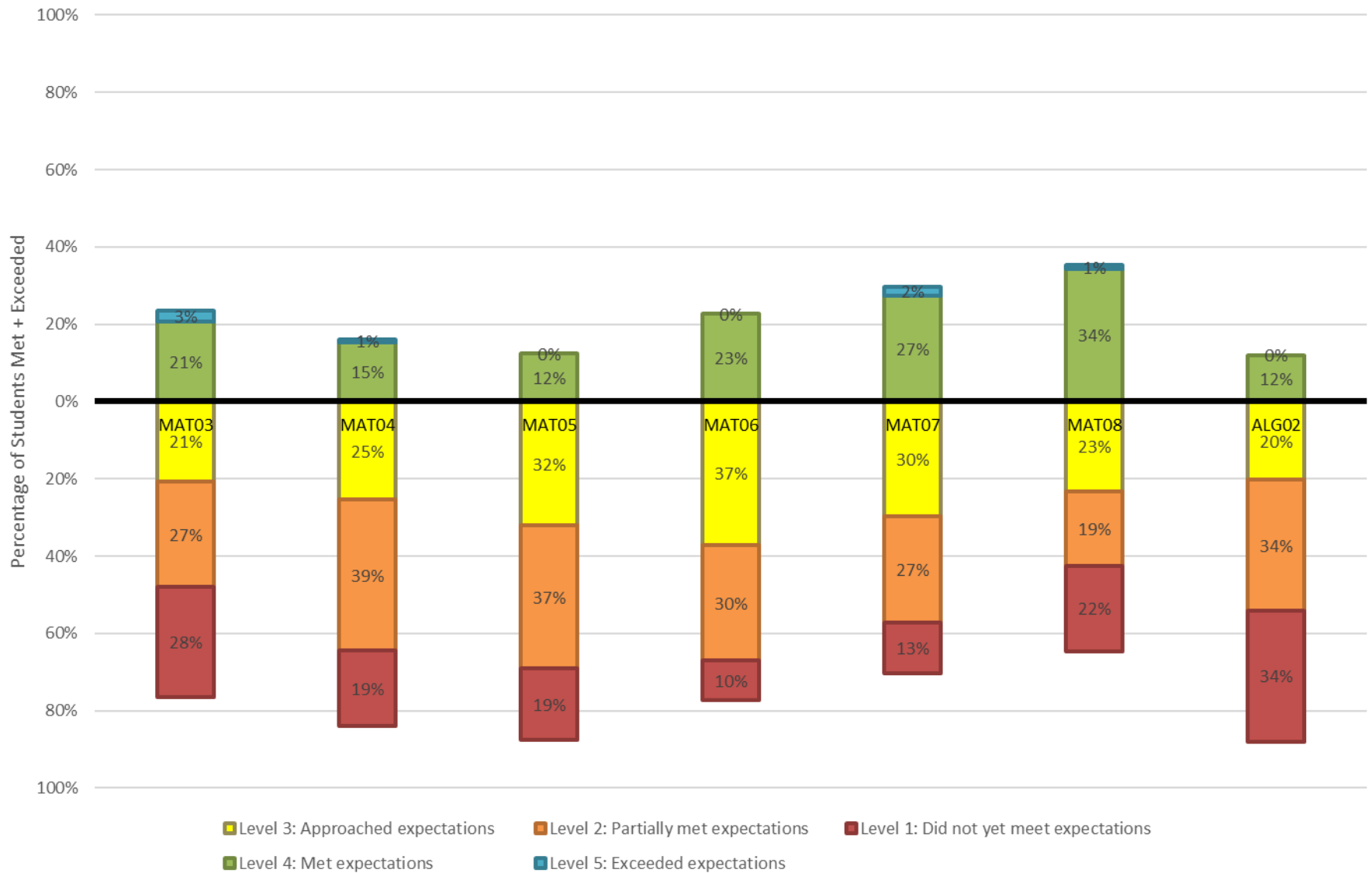
# State Assessment Meets + Exceeds by Year and Assessment 2005-2015



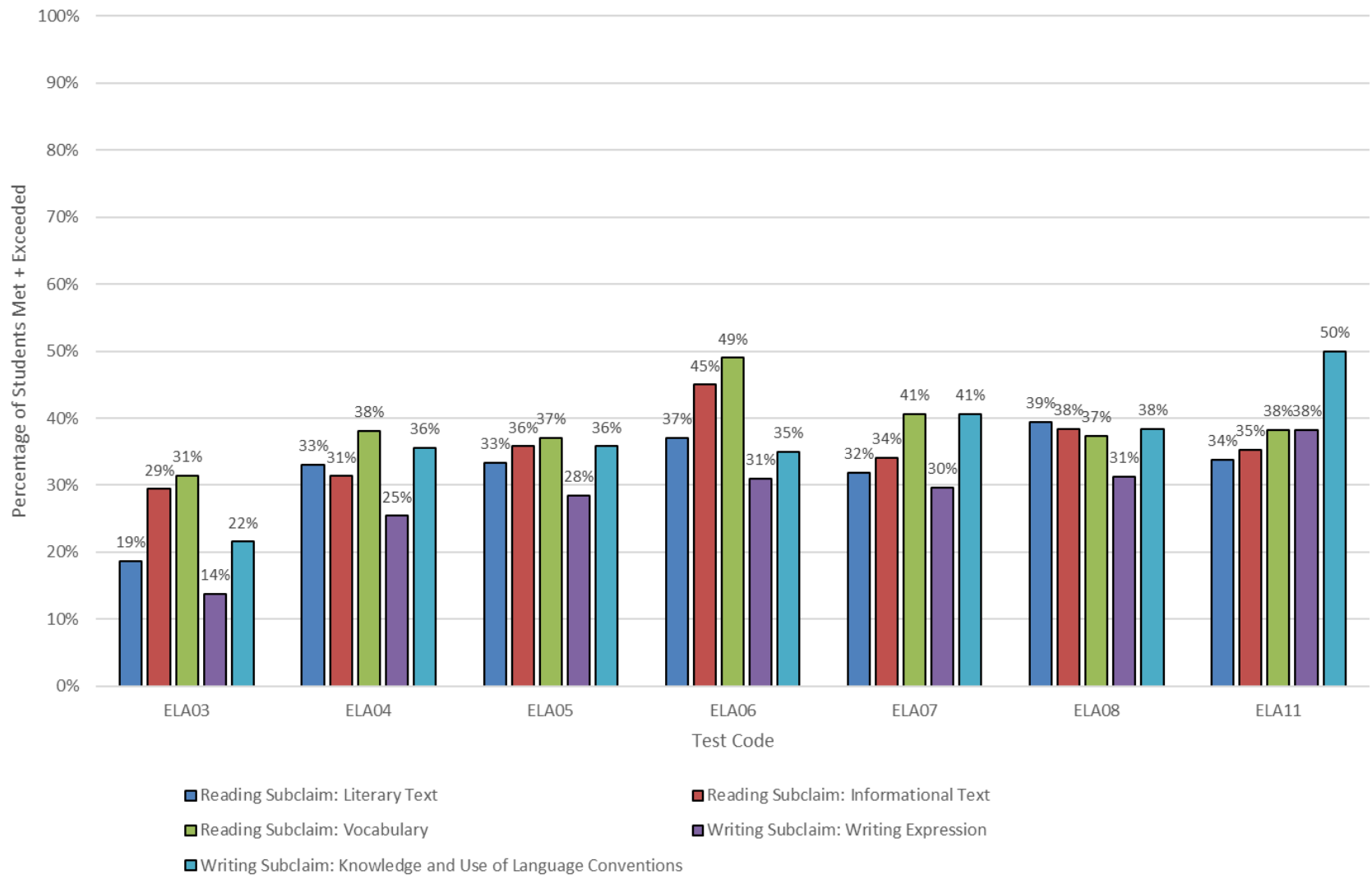
# Oregon CUSD PARCC 2015 English/Language Arts By Grade and Performance Level



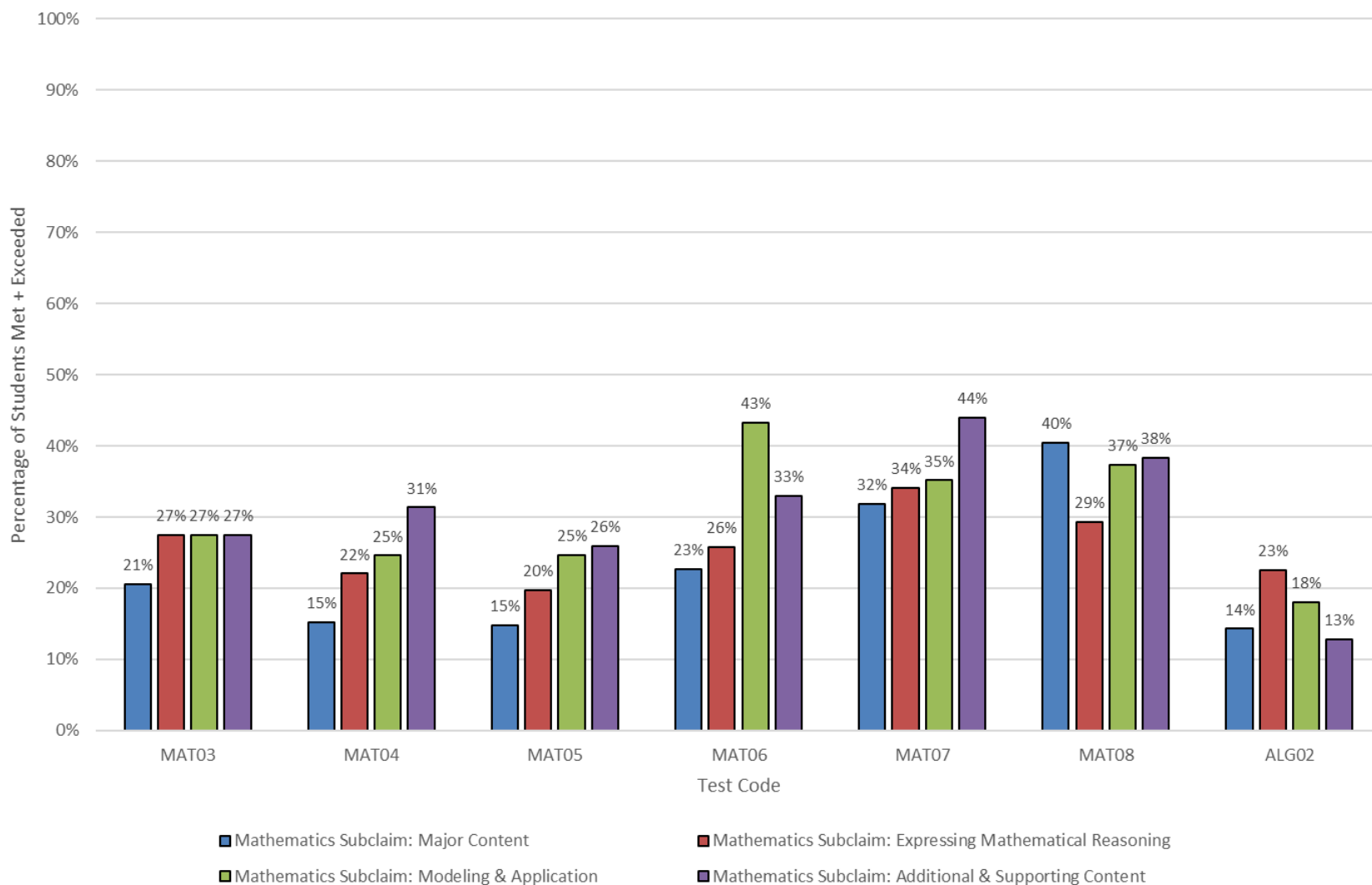
# Oregon CUSD PARCC 2015 Mathematics By Grade and Performance Level



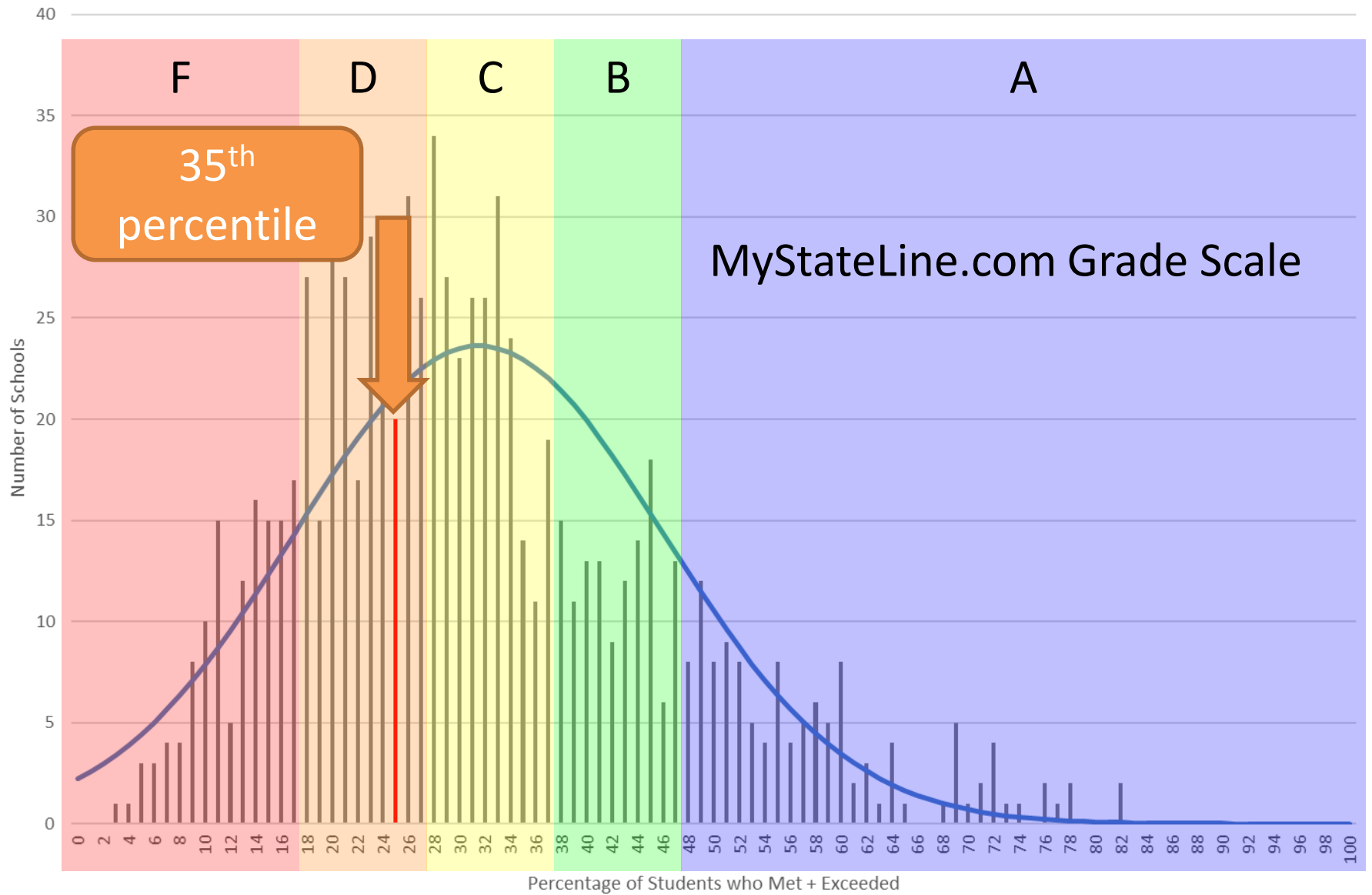
# Oregon CUSD PARCC 2015 English/Language Arts Met + Exceeded By Grade and Subclaim



# Oregon CUSD PARCC 2015 Mathematics Met + Exceeded By Grade and Subclaim

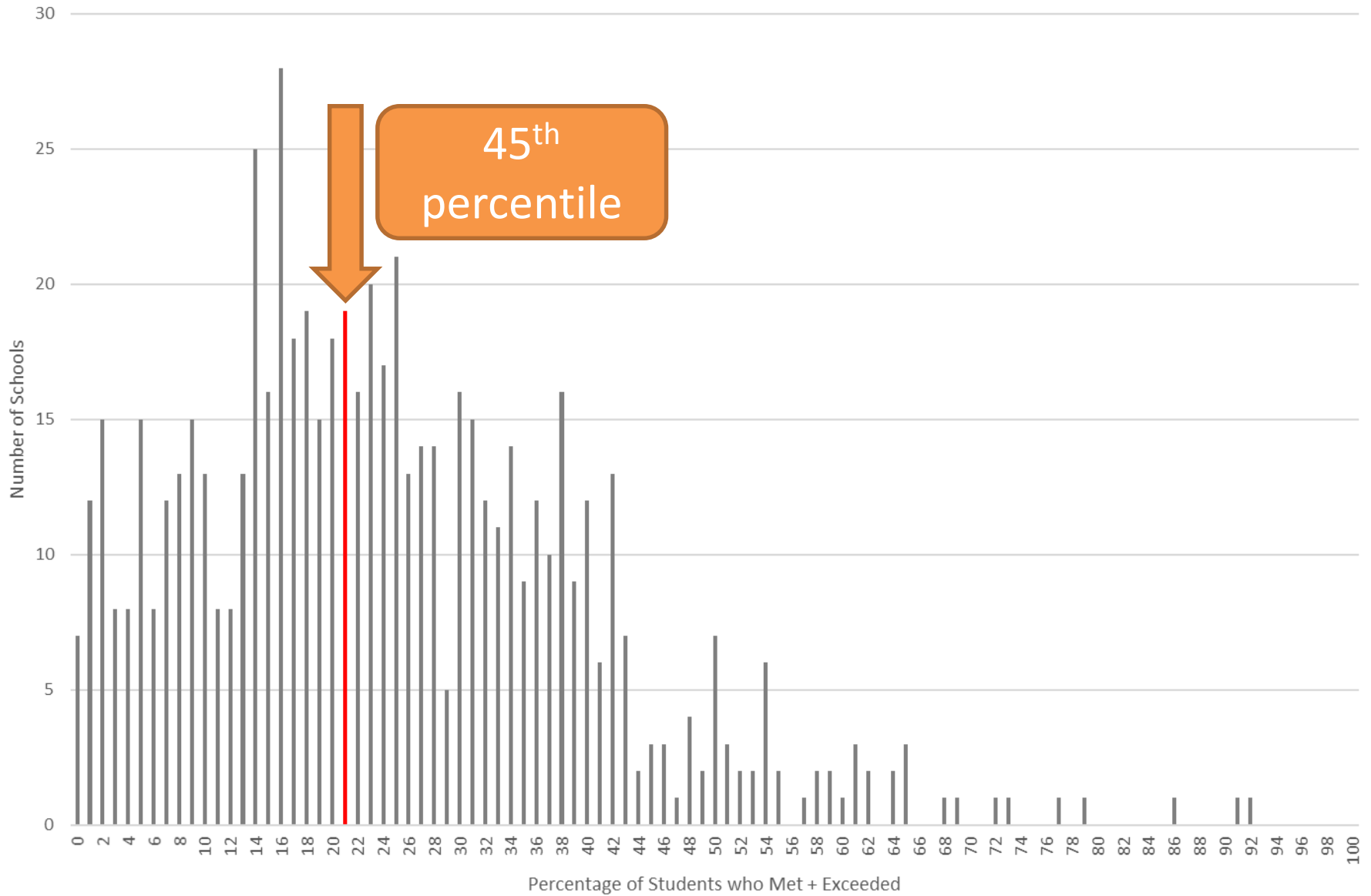


PARCC 2015  
Illinois School Districts

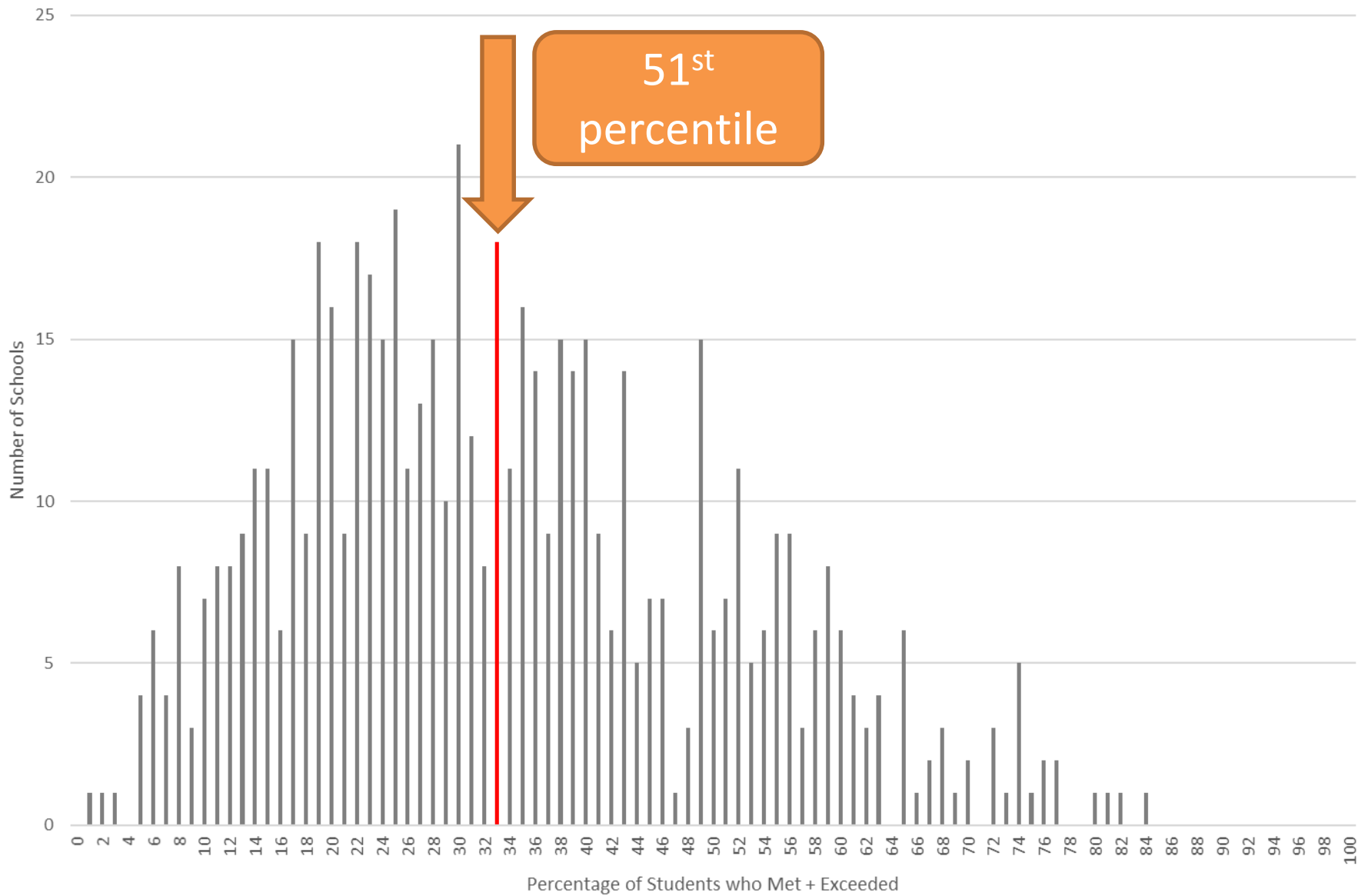




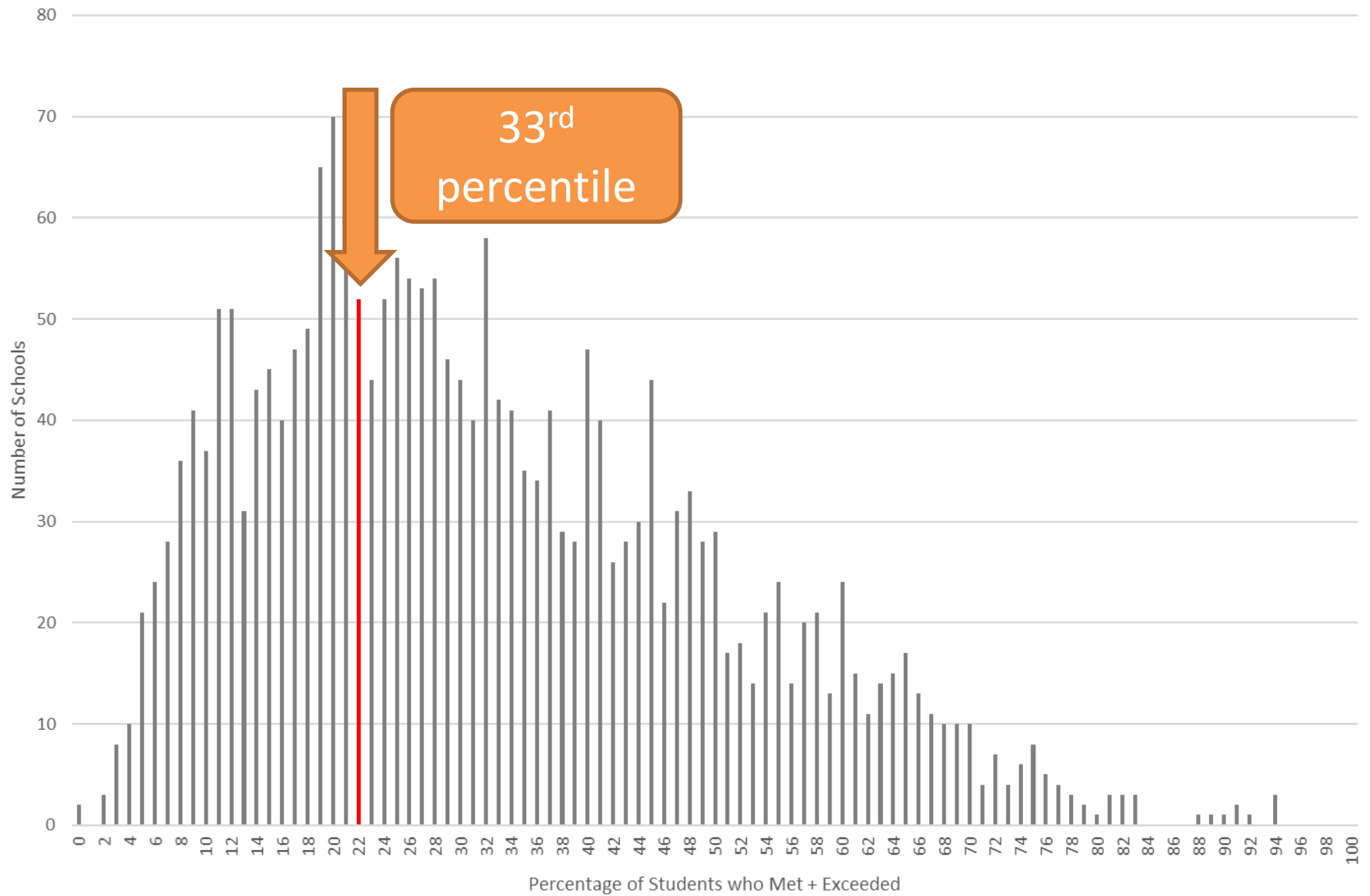
PARCC 2015  
Illinois High Schools



PARCC 2015  
Illinois Junior Highs/Middle Schools



PARCC 2015  
Illinois Elementary Schools





# Oregon School District

## Teacher Thoughts

- Test fatigue
- Reading levels
- Length
- Technical skills
- Essay requirements
- PARCC results
- Cut scores
- NAEP (National Assessment of Educational Progress)

