



Date: Apr 17, 2017

From: Adam Larsen, Assistant Superintendent

To: Board of Education

Cc: Thomas Mahoney, Superintendent

Re: Apr 2017 Board Report

## PARCC 2017

DLR Junior High has finished PARCC testing for 2017. Oregon Elementary School is nearing completion. A more comprehensive update will be available in May 2017.

## Illinois Science Assessment 2017

The Illinois Science Assessment took place at OES and DLR on Wednesday, April 12. Oregon High School will be completing the assessment for Biology and Honors Biology students on Friday, April 21. A more comprehensive update will be available in May 2017.

## SAT 2017

The state-mandated assessment for high school students in Illinois has transitioned from ACT to SAT. To support this, we provided students with a practice SAT assessment on Thursday, Feb 16, 2017. Much like we used to do with the ACT, we attempted to simulate the actual testing environment as much as possible.

Timing, the question booklet, the answer sheet, and even the score report were imitated very closely on the practice test date. We had developed a robust system for the practice ACT that needed to be torn down and rebuilt for SAT, so the learning curve was not solely for the students. The assessment itself is broken down into two Sections: Evidence-Based Reading and Writing, and Math. Within those Sections, there are three Tests: Reading, Writing and Language, and Math. Across all of those questions, there are nine Cross-Tests and Subscores. Taken together, the student receives quite a bit of information about his or her performance on the assessment.

The most important bits of information come from the Section scores. SAT publishes benchmark levels for Evidence-Based Reading and Writing and for Math that correspond to college readiness. These benchmark targets slide up with each grade level as students close in on the end of high school.



# OREGON

## CUSD220

Academics | Activities | Service | Leadership

The student scores appeared to be fairly typical of a school of our size and demographics, with certainly fewer of the students demonstrating college-level performance in Math than in Reading and Writing.

65% of students were described as “On Track” in Reading/Writing, while only 35% demonstrated the same level of performance in Math.

Cutscores	On Track	460	510
	Close	430	480

Frequencies	On Track	65.3%	34.7%
	Close	8.0%	10.7%
	Need To Strengthen Skills	26.7%	54.7%

Reading/Writing	Math
-----------------	------

Further summaries of student performance and a sample score report follow.

# SAT<sup>®</sup>

## Score Report

Student:

High School Code: **143315**High School Name: **Oregon High School**

### Online Score Report

Go online to get more details about your performance, including areas of strength, and check out the action steps in Skills Insight to help you boost your college readiness.

### Your Total Score

# 870

400 to  
1600**24**Nationally Representative  
Sample Percentile**14**SAT User Percentile –  
National

### Section Scores

**420** | 200 to 800Your Evidence-Based  
Reading and Writing  
Score**22**Nationally Representative  
Sample Percentile**13**SAT User Percentile –  
National

You scored below  
the benchmark.

**450** | 200 to 800

Your Math Score

**20**Nationally Representative  
Sample Percentile**12**SAT User Percentile –  
National

You scored below  
the benchmark.

### Test Scores

**23** | 10 to 40

Reading

**19** | 10 to 40

Writing and language

**22.5** | 10 to 40

Math

### Cross-Test Scores | 10 to 40

**27**

Analysis in History/Social Studies

**17**

Analysis in Science

### Subscores | 1 to 15

**8**Command of  
Evidence**6**Words in  
Context**6**Expression of  
Ideas**5**Standard English  
Conventions**8**

Heart of Algebra

**7**Problem  
Solving and  
Data Analysis**5**Passport to  
Advanced  
Math

### How Did I Score Compared to Others?

A percentile is a number between 1 and 99 that shows how your score ranks compared to other students. It represents the percentage of students whose scores are equal to or below yours. For example, if your Math score percentile is 57, that means 57 percent of test-takers have Math scores equal to or below yours.

You'll see two percentiles:

**The Nationally Representative Sample Percentile** shows how your score compares to the scores of all U.S. students in your grade, including those who don't typically take the test.

**SAT<sup>®</sup> User Percentile — National** shows how your score compares to the scores of students who typically take the test.

### Will My Scores Change and Why?

Tests are not exact measures, and many factors can affect your score. After all, no two days are the same, and if you took the SAT once a week for a month your scores would change.

That's why it helps to think of your true score as a range from a few points below to a few points above the score earned. Score ranges show how your score can change with repeated testing, assuming your skill level remains the same.

Usually, scores for Evidence-Based Reading and Writing and for Math fall in a range of roughly 30 to 40 points above or below your reported score.

**Total:** Your score  $\pm$  40 points.

**Section:** Your score  $\pm$  30 points.

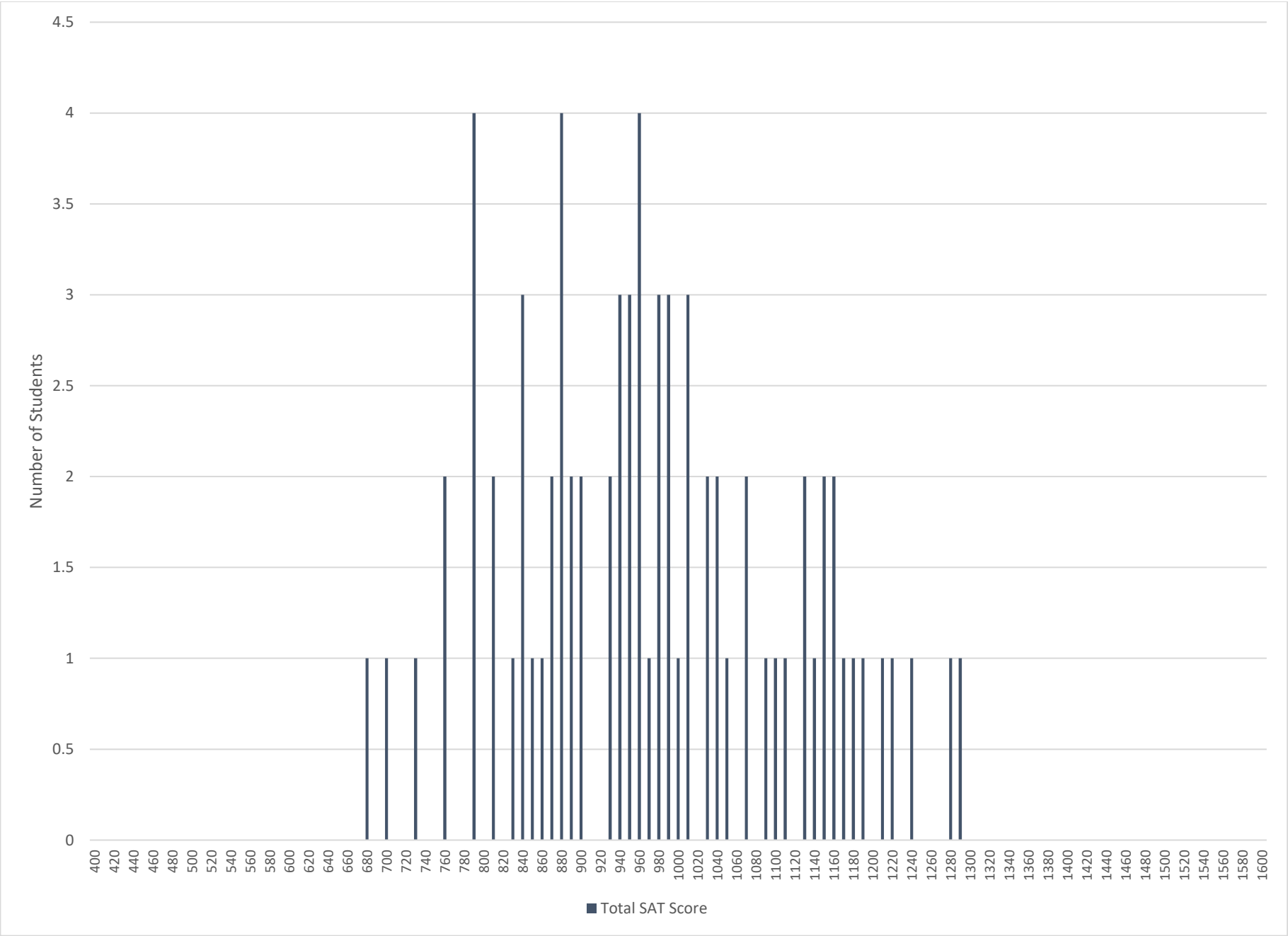
**Test Scores and Cross-Test Scores:**

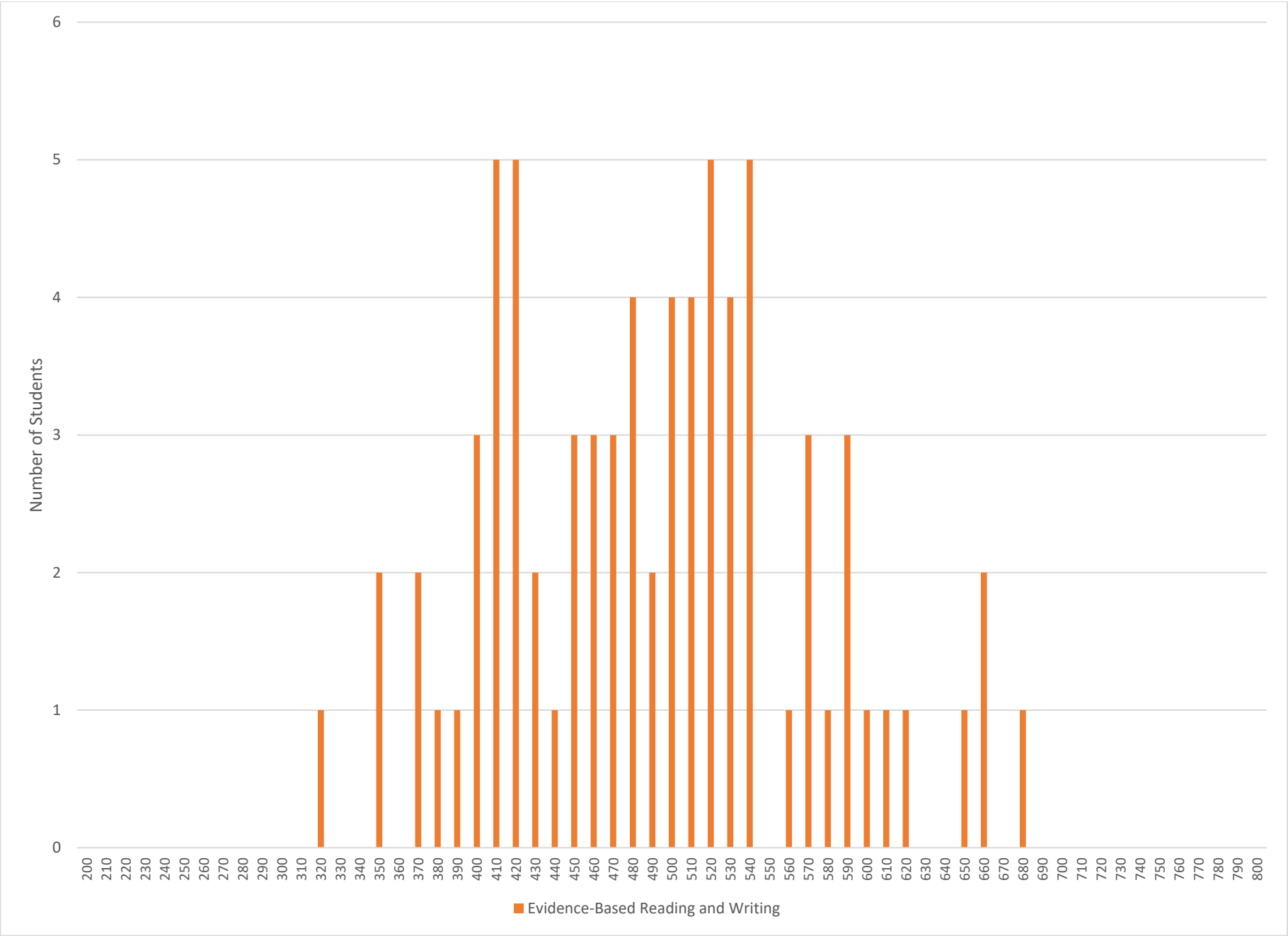
Your score  $\pm$  2 points.

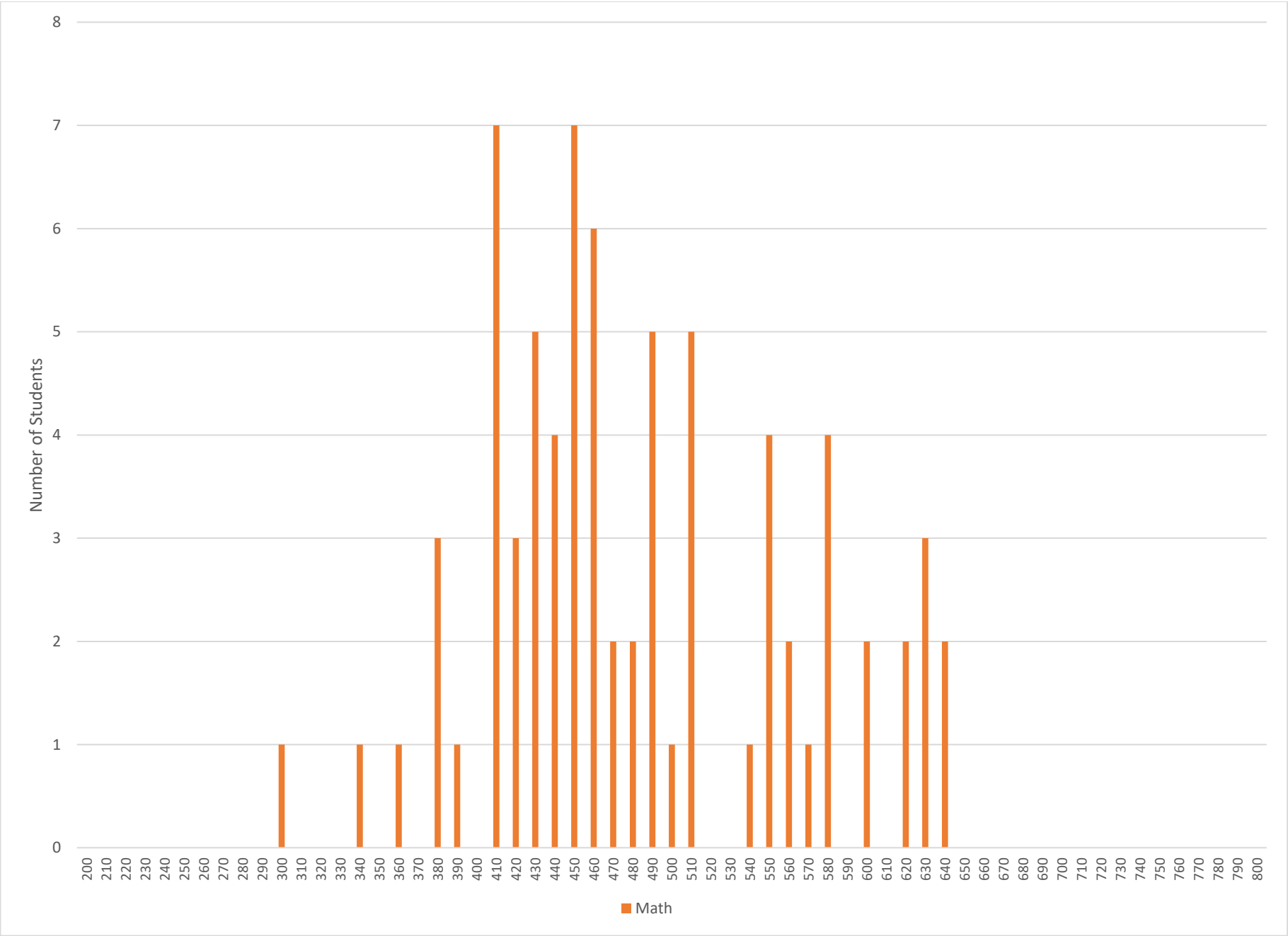
Subscores: Your score  $\pm$  2 points.

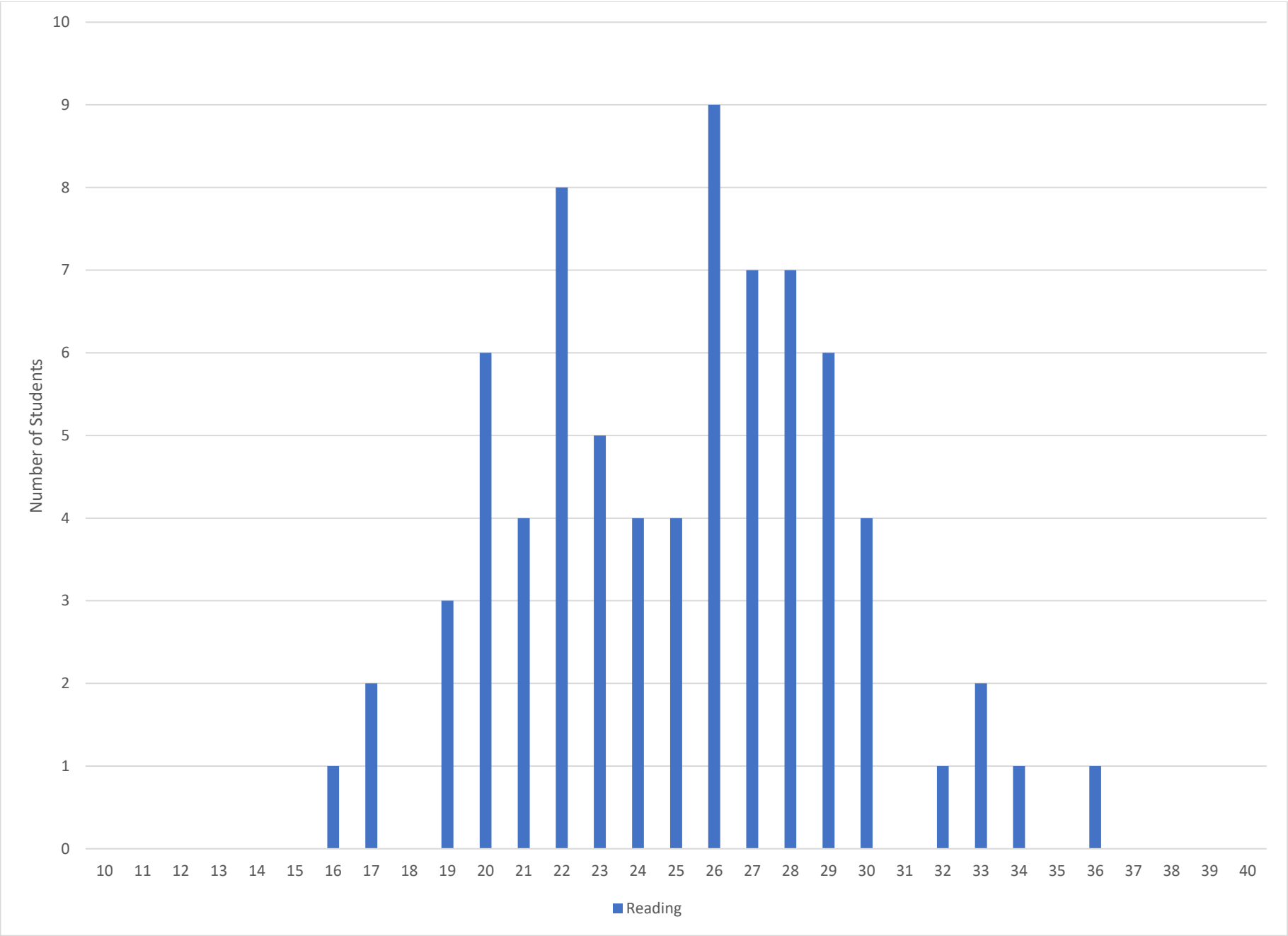
### Am I on Track to Be Ready for College?

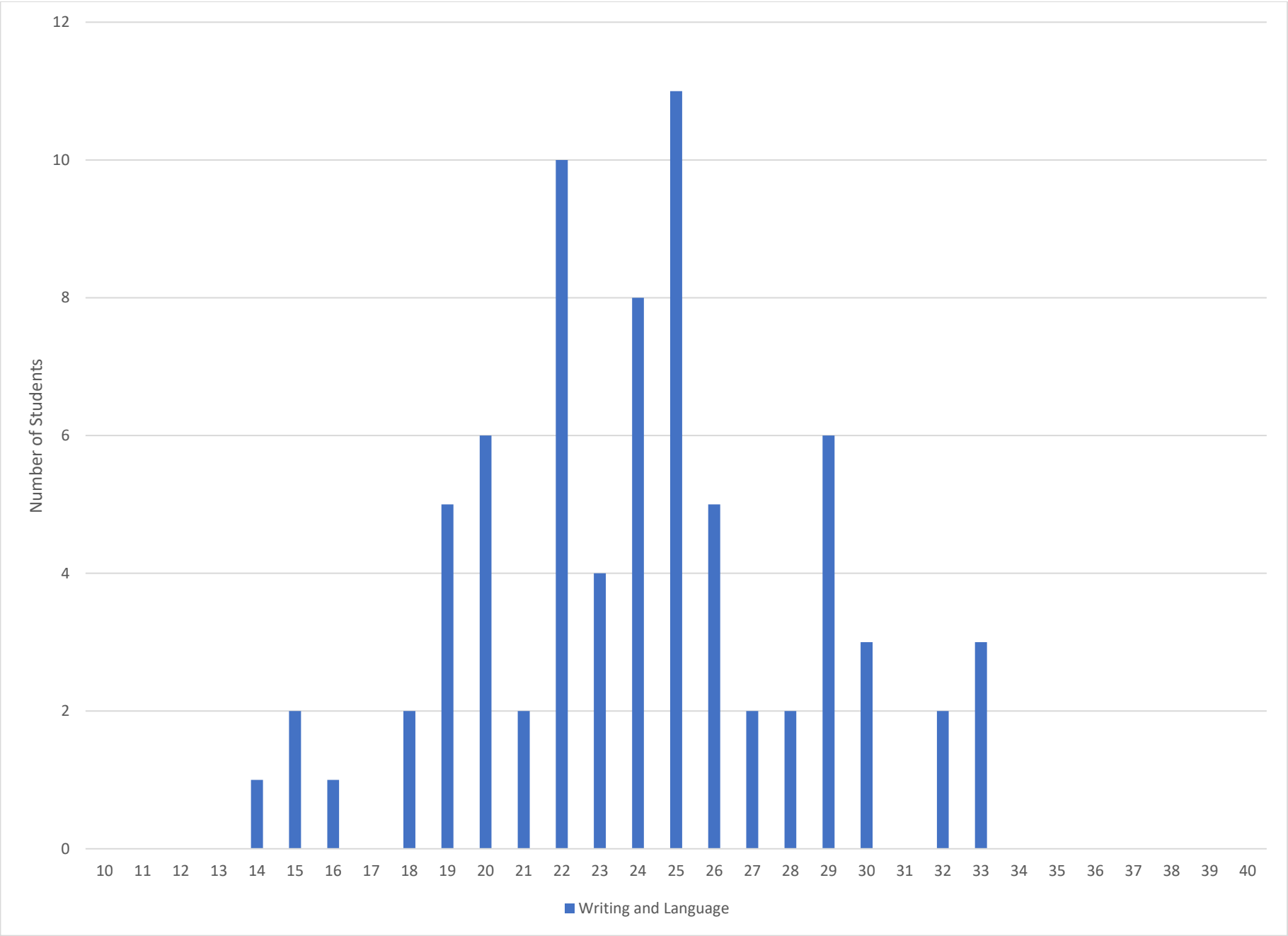
You'll see a benchmark score for each section of the SAT. Benchmarks show your college readiness. The Evidence-Based Reading and Writing benchmark is 480 while the Math benchmark is 530. This means if you score at or above the benchmark, you're on track to be ready for college when you graduate high school. If you score below the benchmark, you can still get back on track by focusing on areas where you didn't perform well. Use the detailed feedback in your online score report to see which skills you need to work on most.



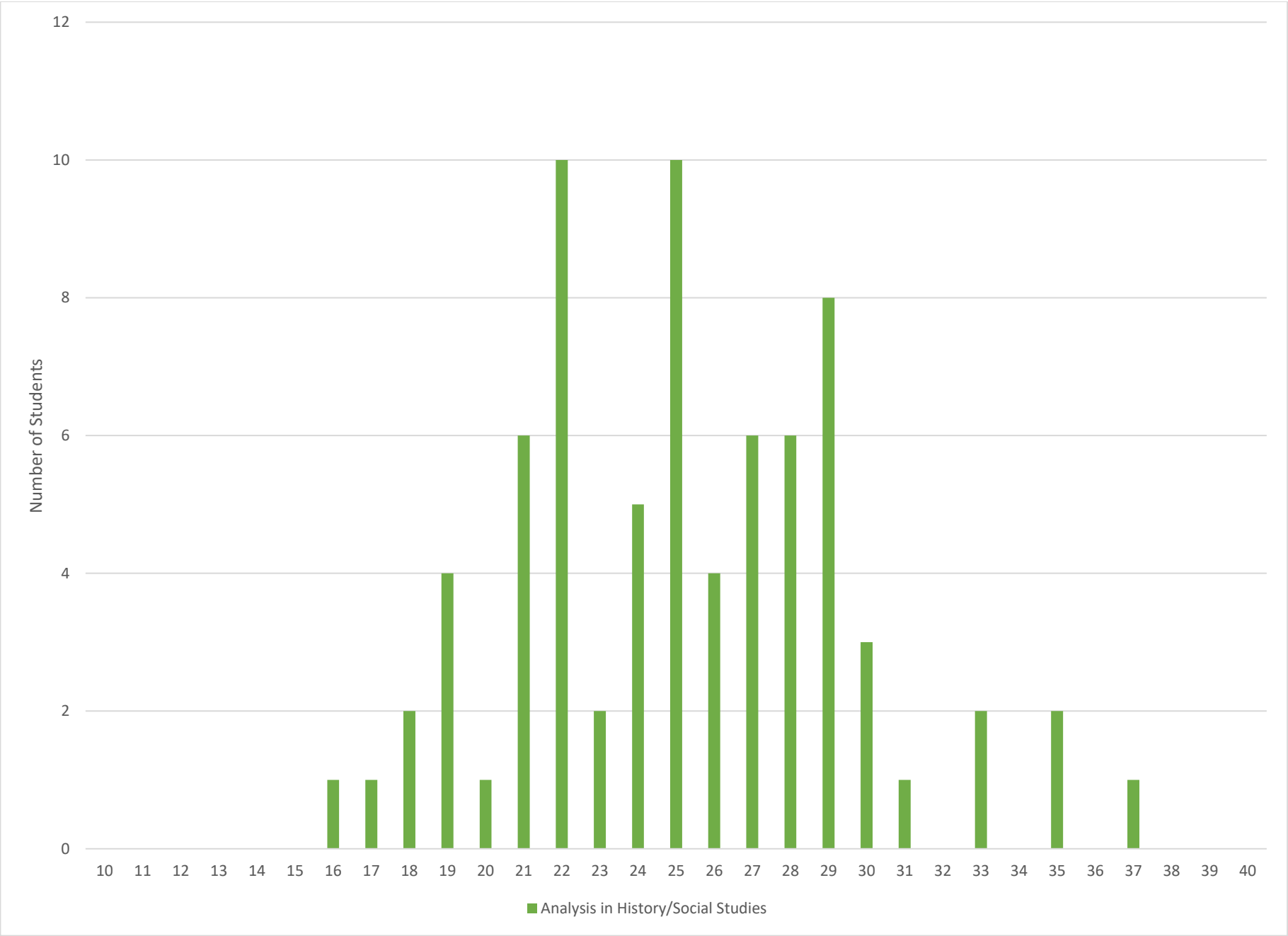


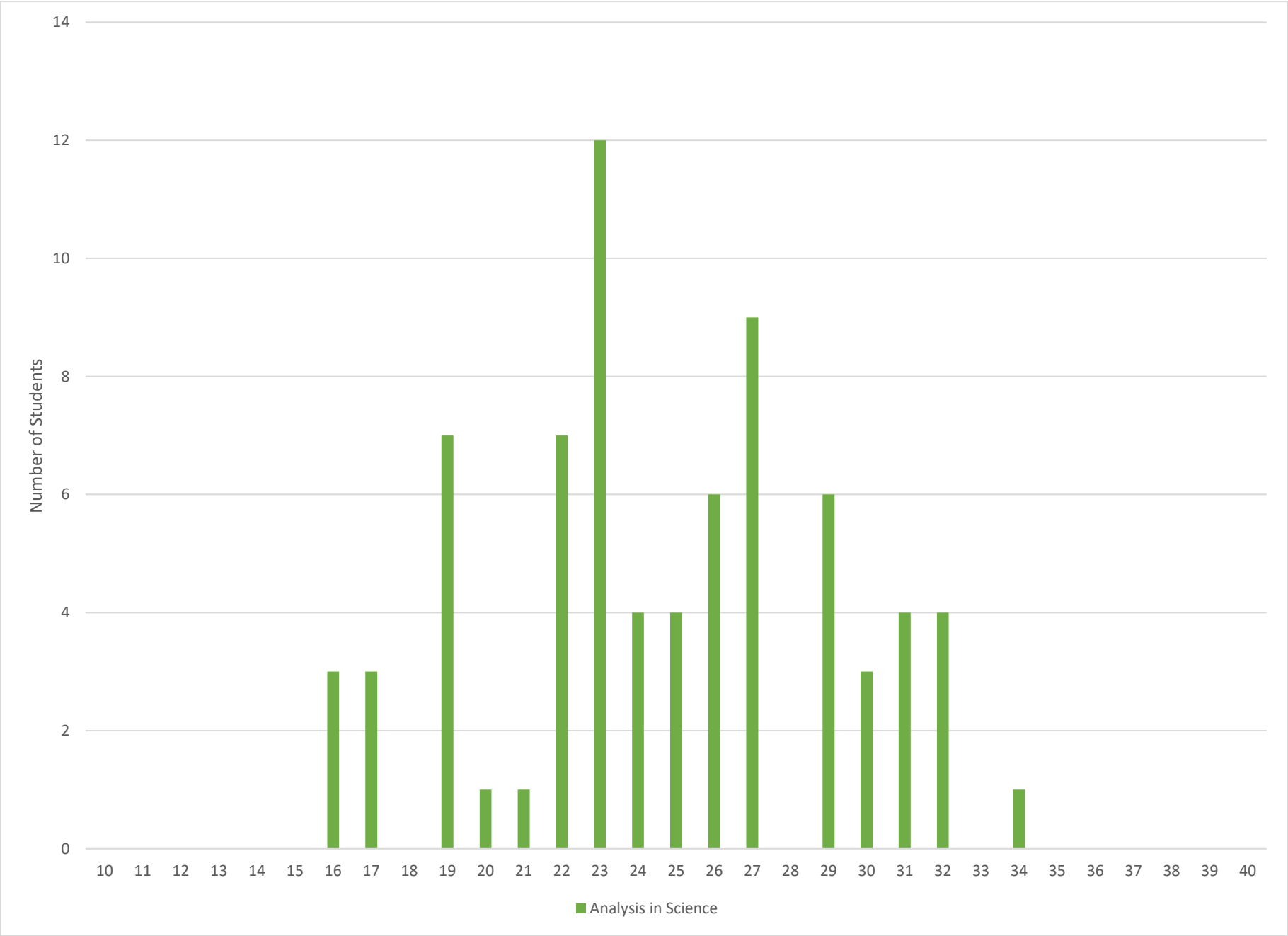


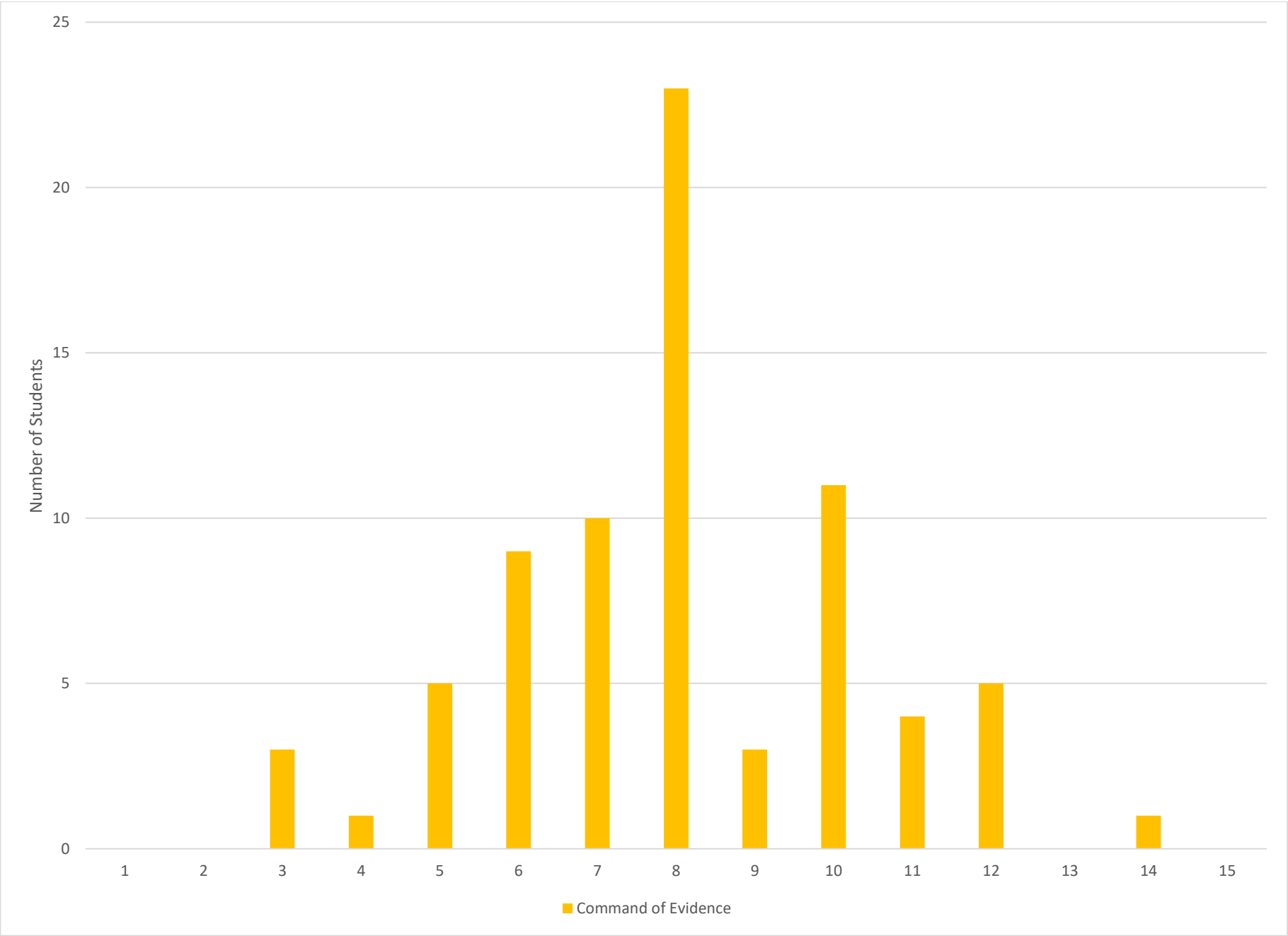


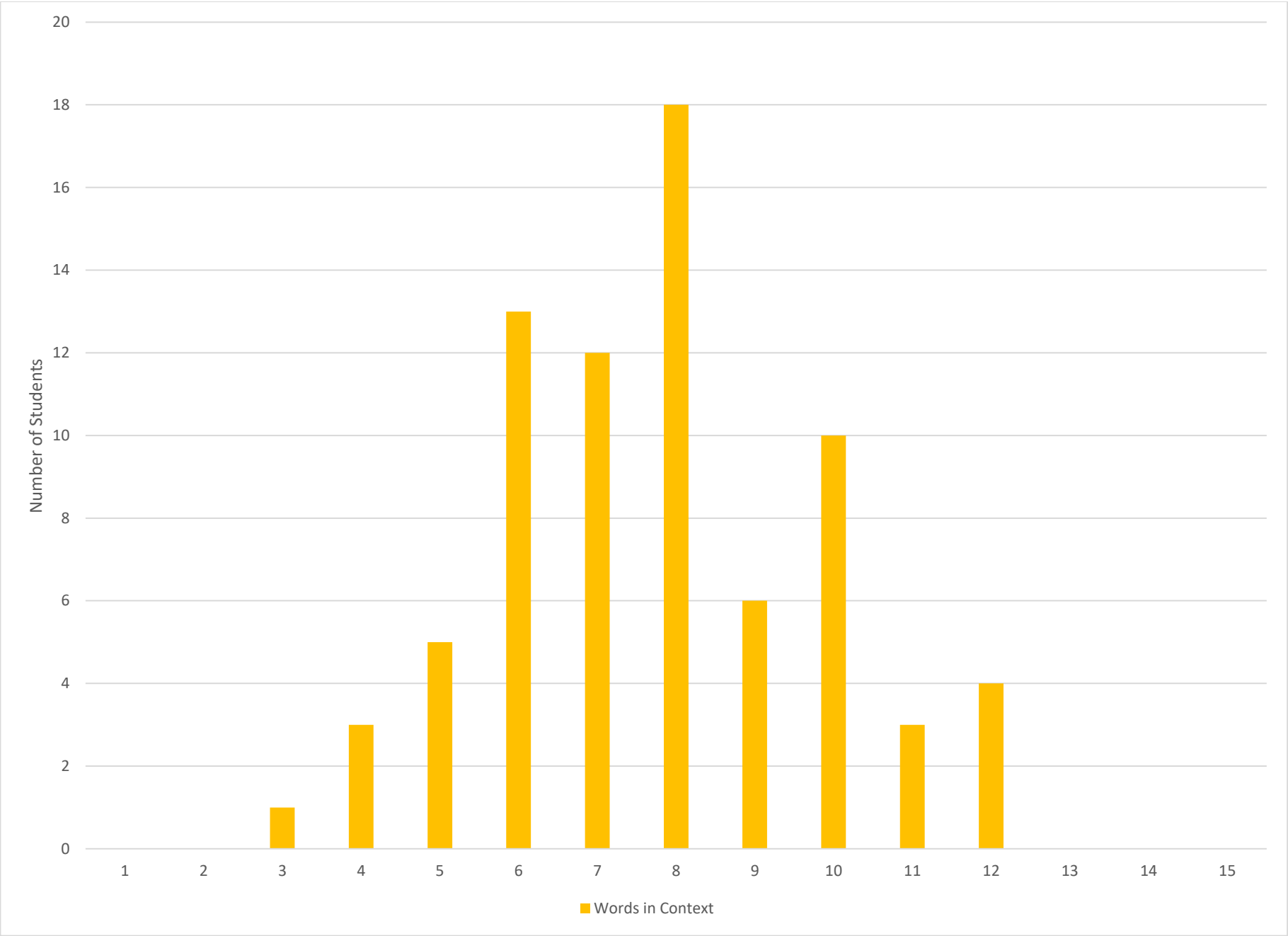


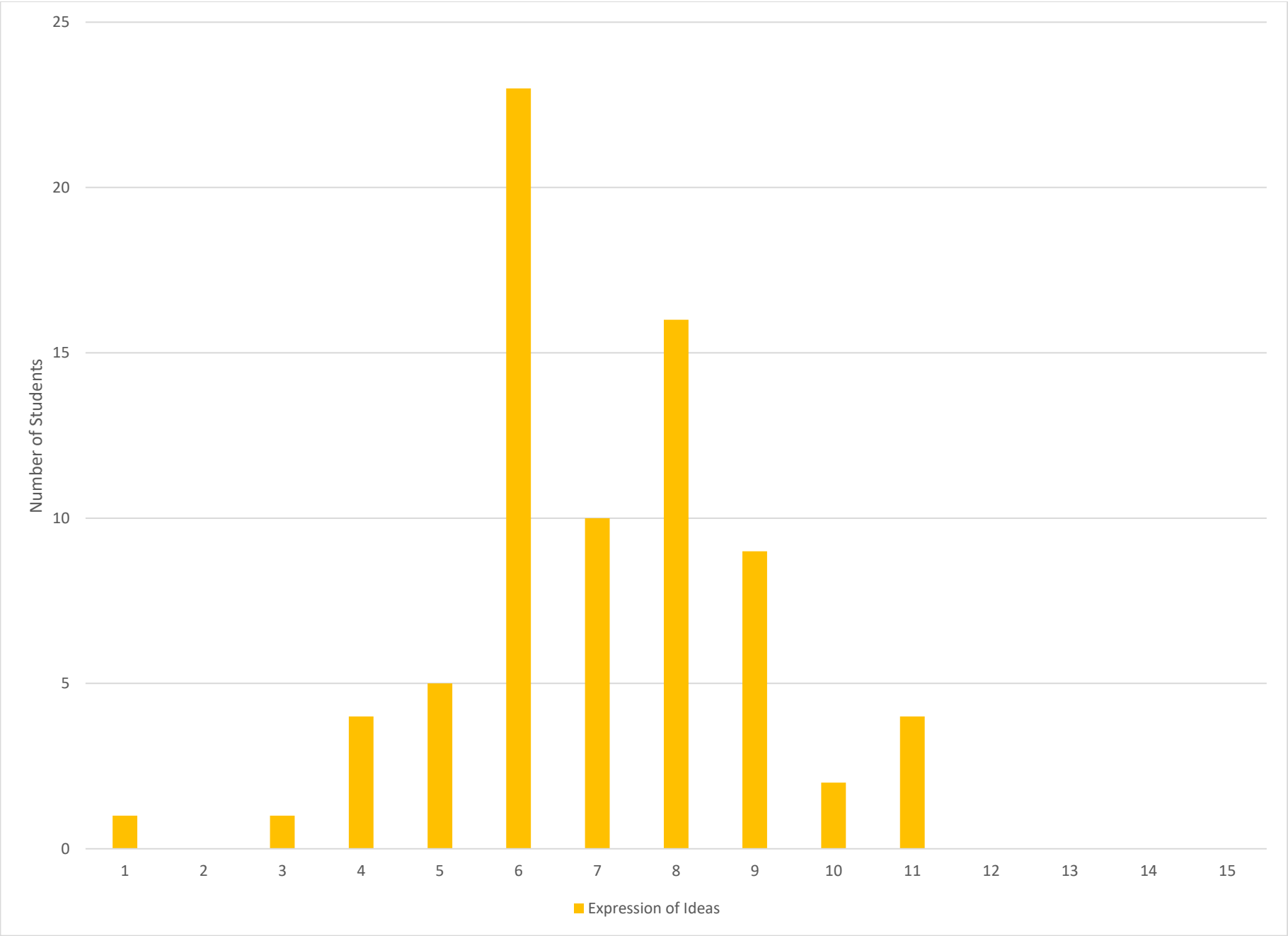


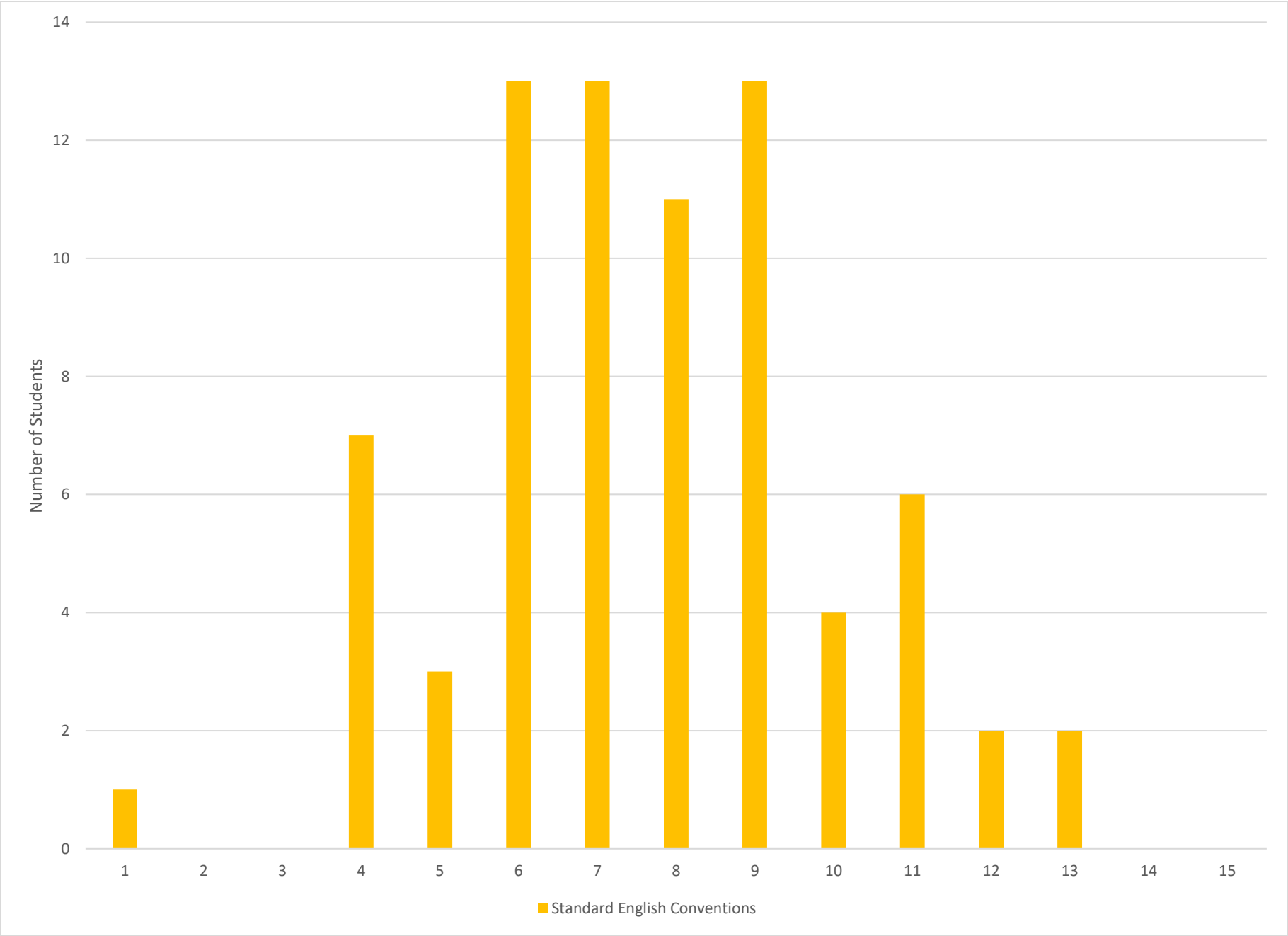


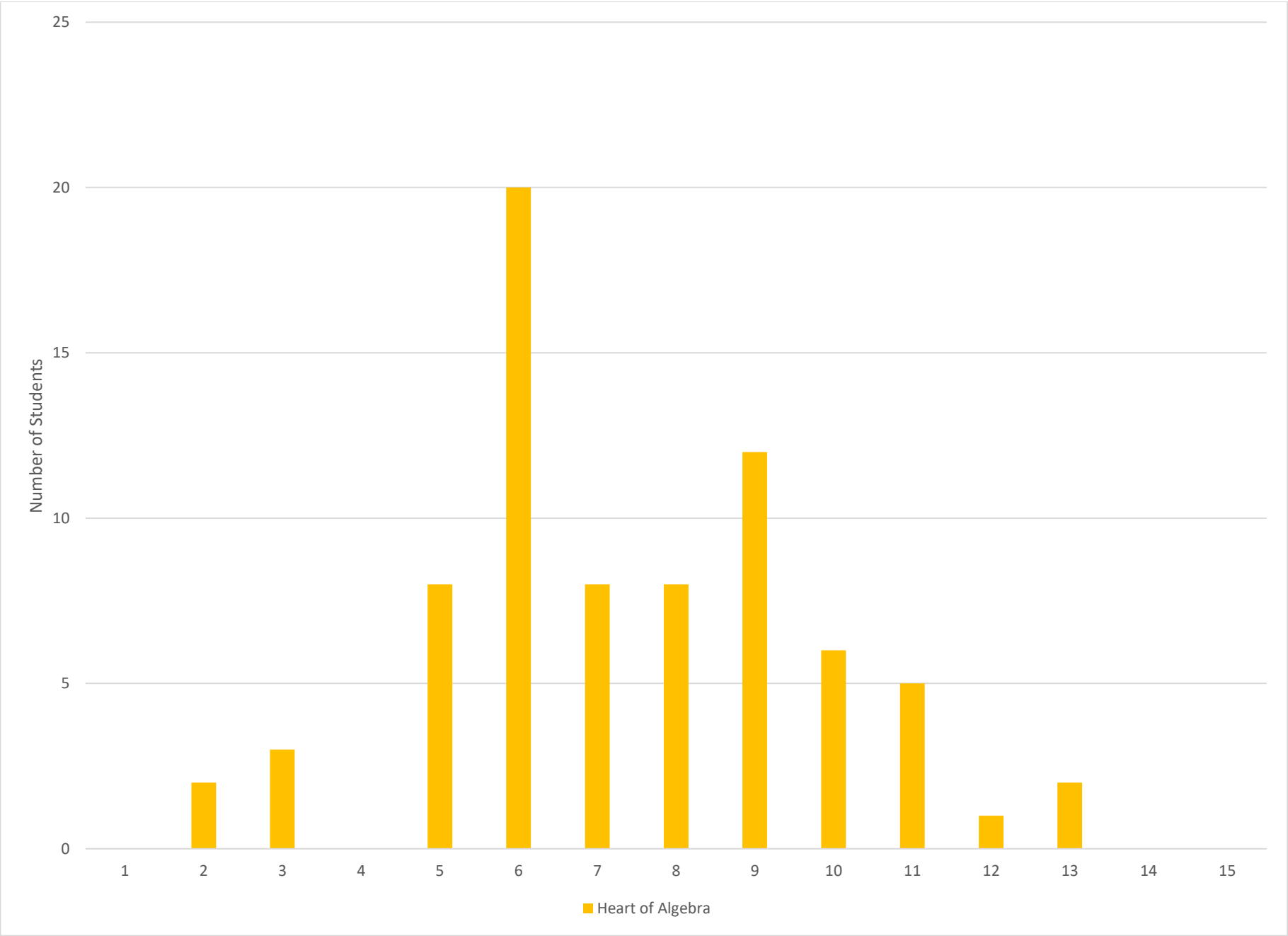


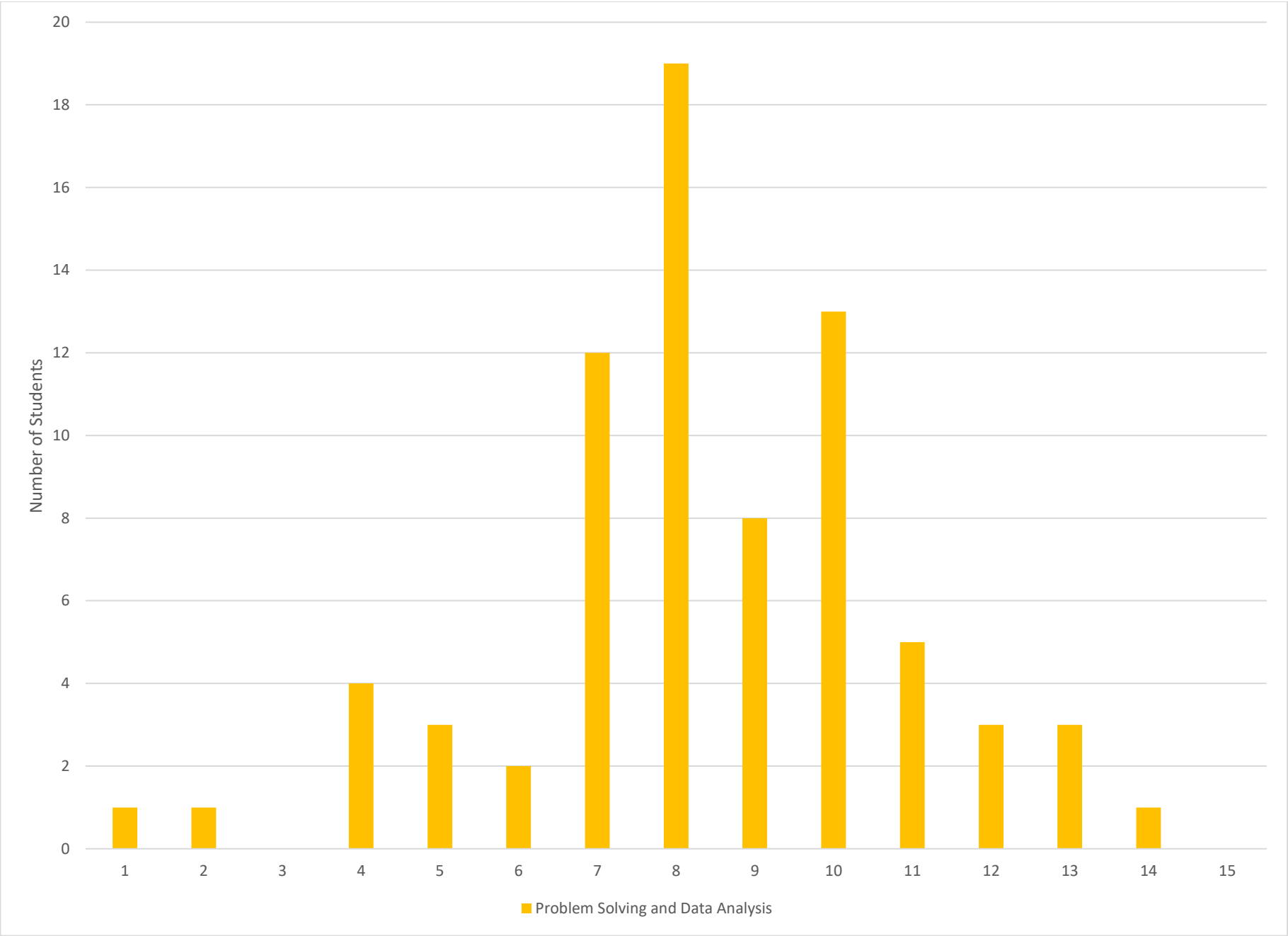




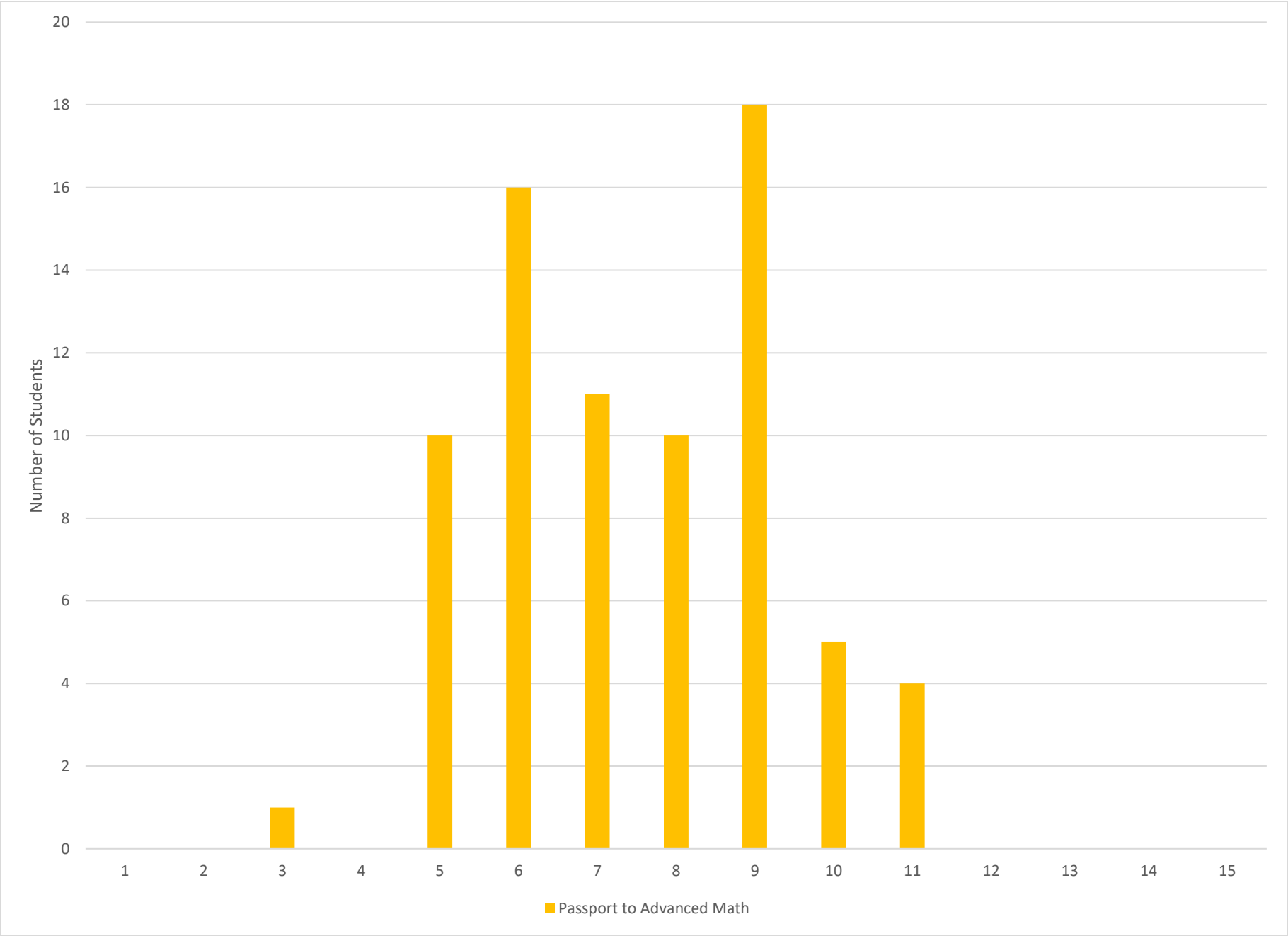














**OREGON**  
**CUSD220**

Academics | Activities | Service | Leadership

Summary scores and score report



## PowerTeacher Pro Migration

The biggest PowerSchool project that we needed to complete this year was the migration to the new gradebook, PowerTeacher Pro (PTP). This migration was necessary to prepare us for the eventual selection and adoption of a learning management system. PowerSchool is only performing active development on this new gradebook, so any new integrations between external systems and PowerSchool will be in this environment.

### Benefits of PowerTeacher Pro:

- Runs on any device, including phones and tablets
- Faster launch each time
- Ability to apply an assignment to multiple classes so scores transfer with students if they happen to move sections
- Ability to inactivate grade categories that are no longer used
- Ability to exempt students from assignments
- New reporting views of student performance, especially for standards grades

### Drawbacks of PowerTeacher Pro

- Removal of some reports. We have created custom reports to plug gaps where we can.
- Lack of realtime update of term grades as assignments are being entered. We have reported this to PowerSchool development.
- Some buggy demographic and information screens for students

As of April 13, we have trained all 92 non-retiring teachers in the district, and the final migration to PTP will occur by May 1, 2017. We developed our own training modules and planned for over a year to deploy PTP. Most teachers participated in trainings after school on Thursdays. Each week, we migrated only one class for each teacher in the training, walked them through the new screens and reports, then let each teacher tell us when to migrate the rest of his or her sections. Steve Stinson was essential to the process, as he helped create the handout material and facilitated the trainings. We look forward to beginning next year with only one gradebook and well-positioned to implement a learning management system when the time comes.

Respectfully Submitted,

Adam P. Larsen  
Assistant Superintendent  
Oregon Community Unit School District 220