

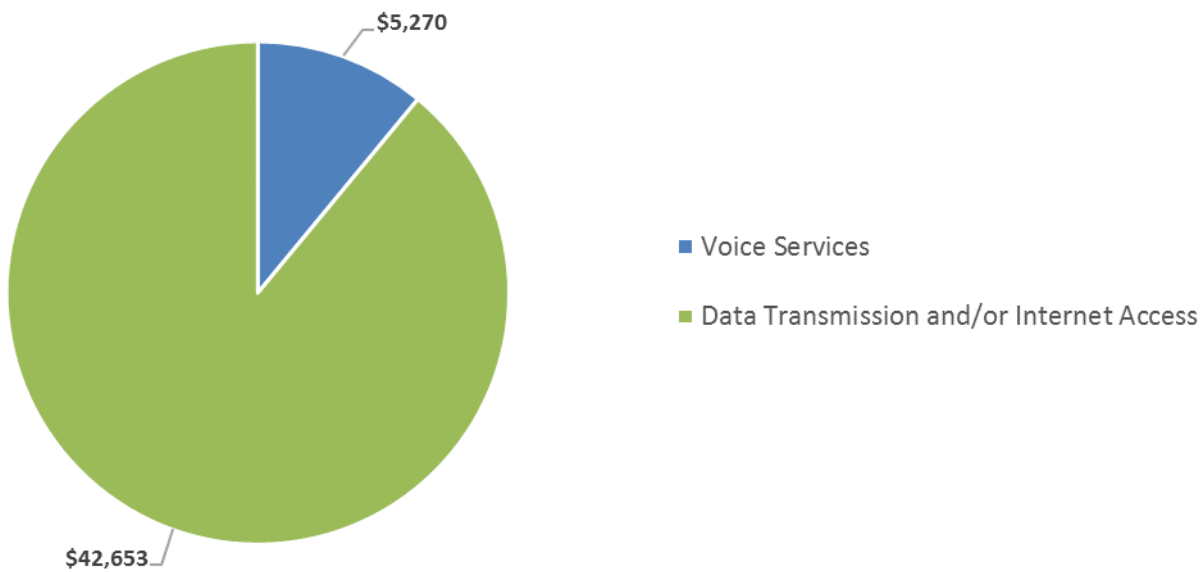
# RESULTS RECAP

PREPARED FOR

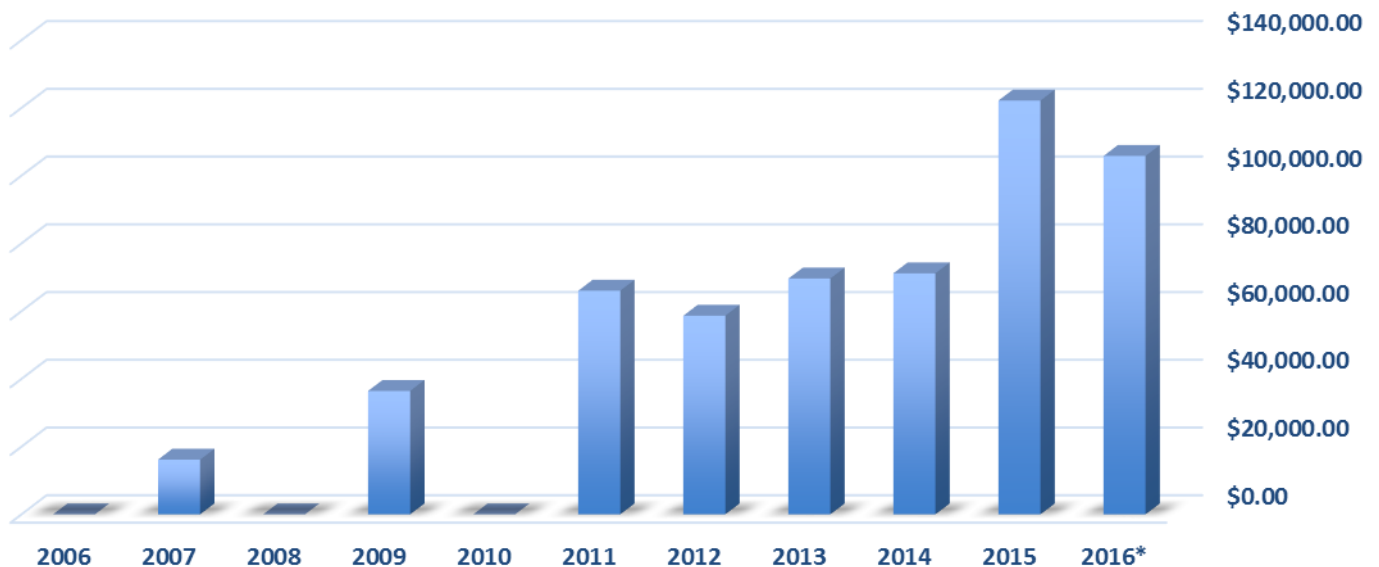
## Oregon School District 220

Thank you for being part of the E-RATE ONLINE Team. Below, you'll find a quick snapshot of the funds that you've requested for the 2017-2018 funding year, as well as your organization's entire E-Rate funding history to date.

### YOUR 2017-2018 FUNDING // \$47,922.75



### YOUR YEAR-TO-YEAR FUNDING // 2006-2016



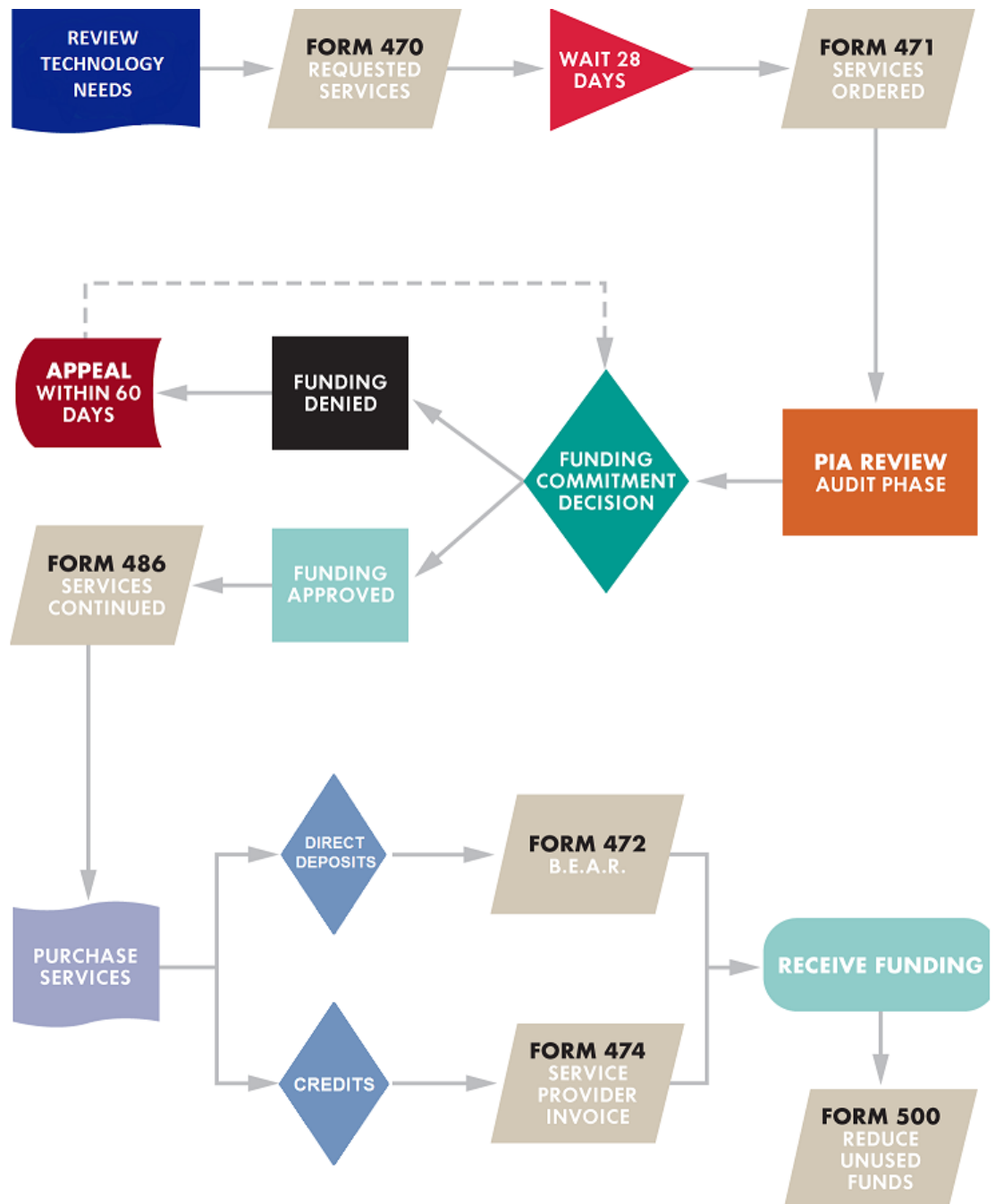
\*Indicates funding committed, not yet disbursed.

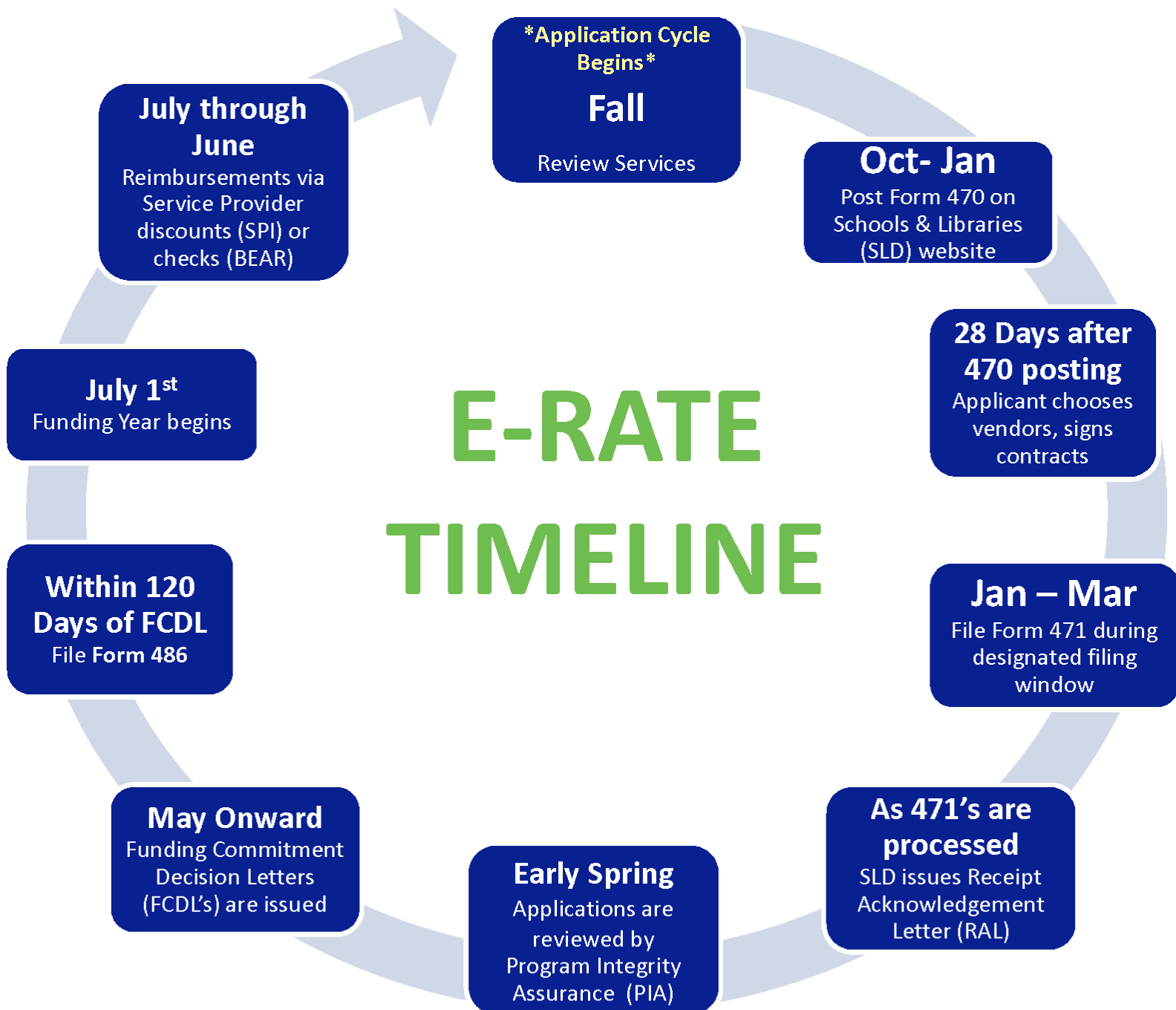
# THE PROCESS

**The details are on us. The funding is all yours.**

With a clear understanding of the process and the actions to be taken, E-RATE ONLINE puts you in control, by keeping you on track and in the know, every step of the way. Here's a look at the annual E-Rate process flow — so you can follow how it all works:

Remember, funding years begin July 1 and end June 30, each fiscal year.





From between the lines to bottom lines – precision pays off